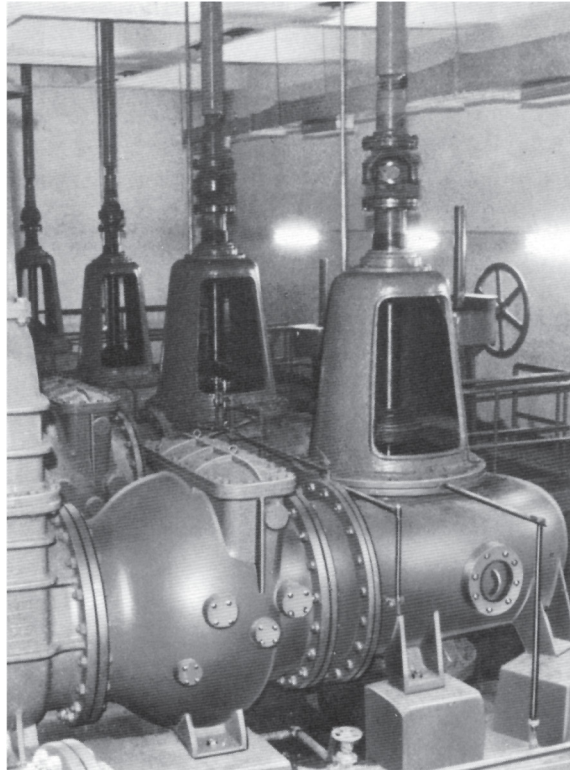


VERTICAL MIXED-FLOW VOLUTE PUMP



APPLICATIONS

Pump is specially designed for handling combined sewage including sand and non-corrosive large solids of city and factory, storm water and drainage in general.

FEATURES

- **HIGH EFFICIENCY** - Specially designed closed impeller and volute casing create greatest efficiency.
- **NON-CLOGGING** - Impeller has minimum number of vanes to eliminate clogging.
- **SHAFT PROTECTED** - Replaceable sleeve protects main shaft from corrosion by chemical reaction of sewage water.
- **EASY MAINTENANCE** - Rotating parts can be inspected easily without disturbing piping connection and large hand-hole facilitates regular inner inspection.
- **HIGH DURABILITY** - Simplified design and durable construction insure long-life operation and easy maintenance.
- **WIDE SELECTION** - Any model standardized up to the size of 28 inches will meet any of your requirements
- **HIGH QUALITY AND SHORT DELIVERY** - The standard design allows for shortest delivery period while being manufactured under the highest of quality control programs with refined skill and the newest facilities having the capability to supply the largest pumps in the world.

SPECIFICATIONS

Rotative direction	: Clockwise as viewed from driver
Impeller	: Single suction close type
Bearing	: Ball & roller bearings
Bearing lubrication	: Grease lubrication
Shaft seal	: Gland packing (External water injection system)
Flange	: ANSI class 125 We can meet demands for other standard than the above.
Suction elbow	: 90° bend type is our standard, however, we can also manufacture special bend type.