

QUALITY Monobloc Centrifugal Pumps

Type MD / MMD

APPLICATIONS

According to EN 733 (DIN 24255), in cast iron

- Boosting pump
- Farming and industrial systems
- Fire-fighting systems
- Heating and air-conditioning systems
- Washing systems
- Other industrial applications

SPECIFICATIONS

- Maximum working pressure : 10 bar
- Maximum liquid temperature :
 - 90°C (MD)
 - 130°C (MMD)

MATERIALS

- Pump body, bracket and impeller in cast iron
- Shaft in AISI 304 (MD), in AISI 406 (MMD)
- Mechanical seal in carbon / ceramic / NBR (MD)
SiC / SiC / EPDM (MMD)

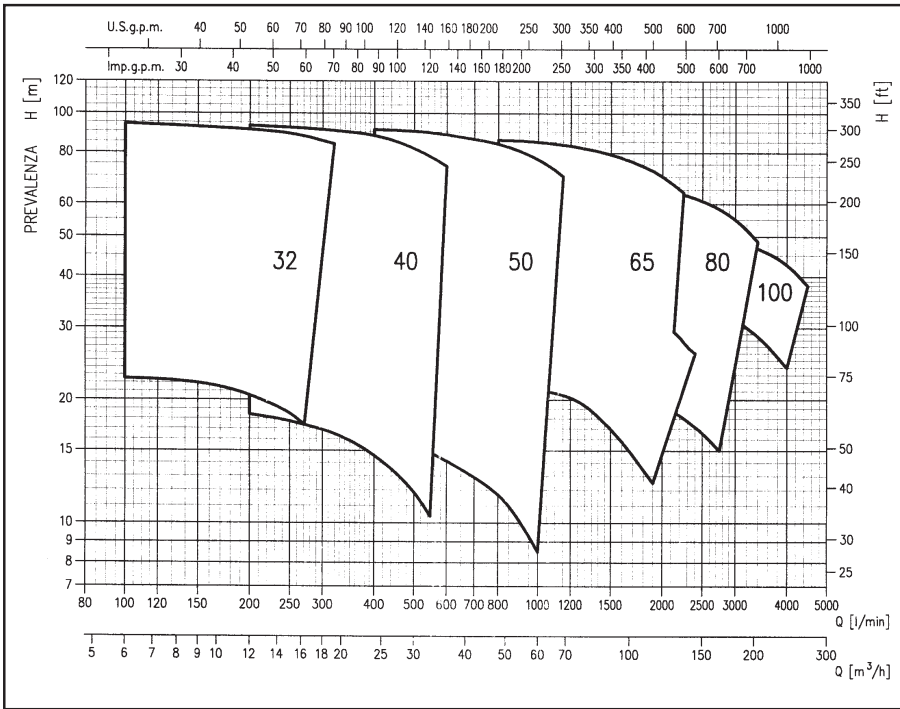
TECHNICAL DATA

- Asynchronous 2 and 4 poles motor
- Insulation : class F
- Protection degree : IP55 (MD), IP54 (MMD)
- 1~230V \pm 10% 50Hz, 3~230/400V \pm 10% 50Hz
up to 4kW included, 400/690V \pm 10% 5.5kW and above
- Permanent split capacitor and automatic thermal overload protection for single-phase version
- Thermal protection to be provided by the user for three-phase version
- Suction : flange to DIN 2532 (50mm-65mm-80mm)
- Discharge : flange to DIN 2532 (32mm-40mm-50mm-65mm)



SELECTION CHART - MD/MMD 32-40-50-65-80-100

2 poles



R.P.M. ≈ 2900min⁻¹
 Test fluid : Clean water 20°C
 Applicable standard :
 UNI EN ISO 9906 Appendice A

PERFORMANCE TABLE (2900 rpm)

Model	Motor		Q=Capacity																												
	kW	HP	H=Total head [m]																												
			l/min	0	100	200	250	280	320	400	550	600	667	800	1000	1100	1150	1200	1400	1900	2000	2200	2300	2400							
MD 32-125/1.1*	1.1	1.5	23	22.5	20.5	18.5	-	-	-	-	-	-	-	-	-	-	-	-	-	-	-	-	-	-	-	-	-	-	-	-	-
MD 65-250/22	22	30	65	64	63	61	57	53	-	-	-	-	-	-	-	-	-	-	-	-	-	-	-	-	-	-	-	-	-	-	-

* Single phase version available

Model	Motor		Q=Capacity																											
	kW	HP	H=Totalhead																											
			l/min	0	800	1000	1250	1500	1750	2000	2250	2500	2750	3000	3500	4000	4500													
MMD 65-250/22	22	30	65	64	63	61	57	53	-	-	-	-	-	-	-	-	-	-	-	-	-	-	-	-	-	-	-	-	-	-
MMD 100-200/37	37	55	54.2	-	-	-	-	53.7	53.3	53	52	51	50	49	46	43*	38**	-	-	-	-	-	-	-	-	-	-	-	-	-

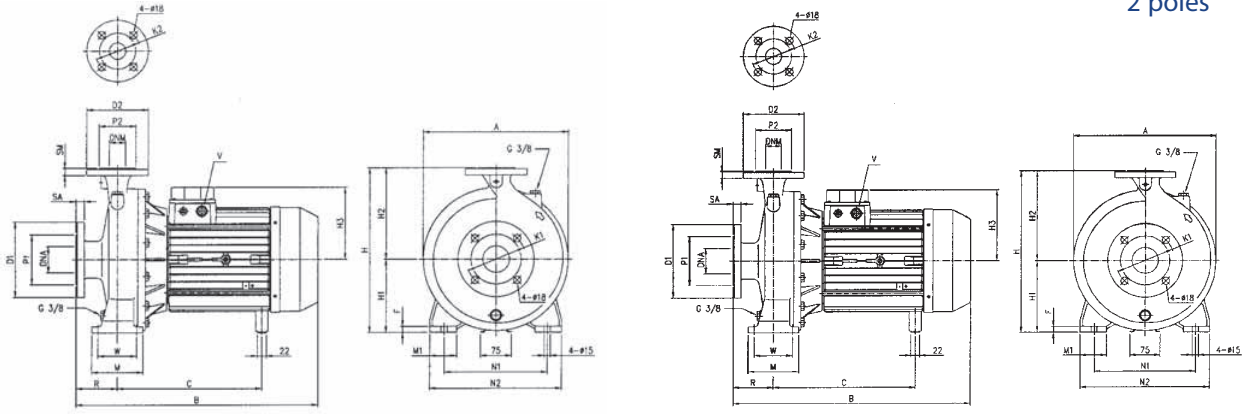
* Suction head has not to exceed 2m
 ** Positive 1m suction head

Monobloc Centrifugal Pumps

MD / MMD

DIMENSION (MD)

2 poles

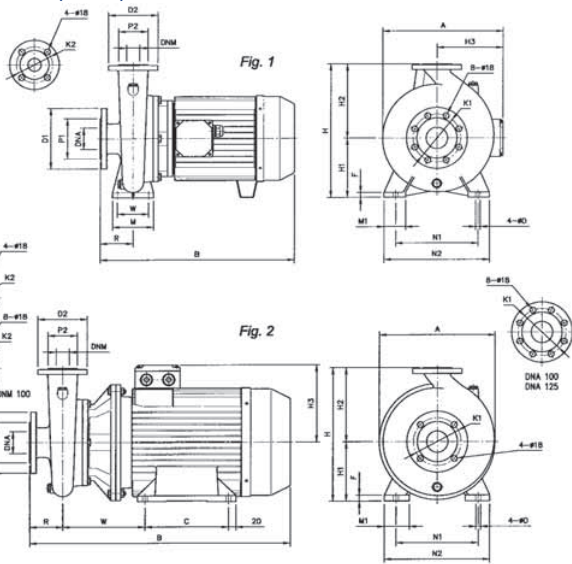


Model	DNA	P1	K1	D1	SA	DNM	P2	K2	D2	SM	Dimension (mm) H3				R	W	N1	M	N2	M1	F	A	B	C	V [1]	Weight [Kg]
											H	H1	H2	[1] [2]												
MD 32-125/1.1											252	112	140	139	80	70	140		190		205		230	PG 13.5	27.6	
MD 32-125/1.5											292	132	160	122						50	13	245	431			28.3
MD 32-160/1.5											340	160	180				100				290	252			31.5	
MD 32-160/2.2													134									459	254			35.4
MD 32-200/3													153			190		240				496				44.1
MD 32-200/4													181					320		65	15	540	275			50.5
MD 32-250/5.5															100	95	250	125				588	351			70.5
MD 32-250/7.5																										74.6
MD 32-250/9.2																										84.3
MD 32-250/11																										87.3
MD 40-125/1.5											252	112	140	122	139	80		160		210		235	431	230	PG 13.5	28.9
MD 40-125/2.2											292	132	160							50	13	245	431			31.9
MD 40-160/3											340	160	180	134			100		240			459	232			39
MD 40-160/4													153					265				290	495	278		45.7
MD 40-200/5.5													181			212						431	351			60.1
MD 40-200/7.5																						479	232			68.5
MD 40-200/11																						300	585	355	PG 21	90.7
MD 40-250/13																										93
MD 40-250/13																										34
MD 50-125/2.2											292	132	160	122	139							230	431	230	PG 13.5	36
MD 50-125/3													134													42.3
MD 50-125/4																						451	254			36
MD 50-160/5.5																						260	495	278	PG 16	57.2
MD 50-160/7.5											340	160	180	153												66.7
MD 50-200/9.2													200	181								300	585	355	PG 21	74
MD 50-200/11											360															80.9
MD 65-125/5.5																										58.3
MD 65-125/7.5													180	153								260	495	278	PG 16	67
MD 65-160/11											340															86.4
MD 65-160/15											380					95		125	280	65		300	585	355	PG 21	91.9

[1] = Three-phase [2] = Single-phase

Model	DNA	P1	K1	D1	SA	DNM	P2	K2	D2	SM	Dimension (mm)				R	W	N1	M	N2	M1	F	A	B	C	V [1]	Weight [Kg]
											H	H1	H2	H3												
MD 40-250/15	65					40	88	110	150	18	405	180	225	230	100	95	250	125	320	65	15	352	734	501	PG 21	96.8
MD 50-250/15	65	122	145	185	20	50	102	125	165	20																97.6
MD 50-250/18.5	65																									126
MD 50-250/22	65																									148
MD 65-200/18.5	80	138	160	200	22	65	122	145	185	20												310	736	548	PG 21	126
MD 65-200/22	80																									135

DIMENSION (MMD)



Model	Fig.	Dimension (mm)																					Weight [Kg]			
		DNA	P1	K1	D1	DNM	P2	K2	H	H1	H2	H3	R	W	N1	M	N2	M1	F	A	B	C		D		
MMD 65-250/22														180	230	293	280	320	55	22	365	810	241	14	144	
MMD 65-250/30	2	80	138	160	200	65	122	145	185	450	200	250	257	100	305	318	360	60	24	400	905	305	18	172		
MMD 65-250/37																									190	
MMD 80-160/10																									74	
MMD 80-160/12.5											405						225	184		95	250	125			81.5	
MMD 80-160/15											180											320			14	88.5
MMD 80-200/18.5																									132	
MMD 80-200/22													430				230								150	
MMD 80-200/30																	250								192	
MMD 80-200/37																									18	210
MMD 80-250/37																										196
MMD 100-200/22	2																									160
MMD 100-200/30																										202
MMD 100-200/37																										220

*All specifications are subject to change without prior notice.



EBARA Pumps Malaysia Sdn Bhd

6, Jalan TP3, UEP Subang Jaya Industrial Park, 47620 Subang Jaya, Selangor, Malaysia.

Tel : 03-8023 6622 Fax : 03-8023 9355

Email : sales@ebara.com.my

Website : www.ebara.com.my



Certificate No. KLR 0500080

Certificate No. KLR 6027651

Authorised dealer: