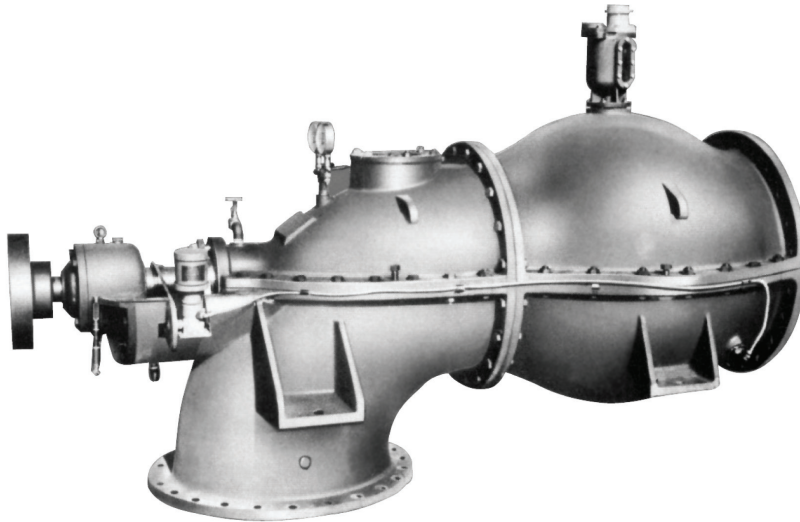


HORIZONTAL MIXED-FLOW PUMP



APPLICATIONS

- River water drainage; Water transfer for sewerage works
- Irrigation and drainage for agricultural
- Water intake/transfer for general industrial

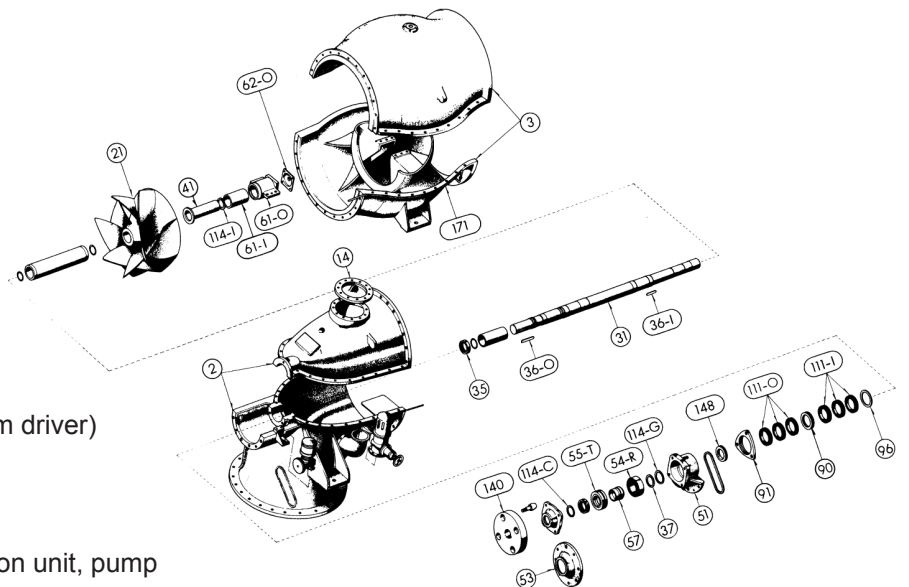
FEATURES

- Split case design permits easy maintenance.
- High efficiency over a wide range.
- Guaranteed high performance, quality and prompt delivery.

SPECIFICATIONS

- Bore 500 ~ 1500mm (20 ~ 60 in)
- Capacity 21 ~ 340m³/min (5500 ~ 90000 USGPM)
- Total head 2 ~ 10m (6.6 ~ 33ft)
- Liquid Fresh water, river water, sea water, etc. Temperature 0 ~ 45°C (32 ~ 110°F)

CONSTRUCTION



Direction of rotation
Impeller
Thrust bearing
Radial bearing
Accessories

CW (viewed from driver)
Semi-open type
Roller bearing
Ball bearing
Grease lubrication unit, pump base, shaft coupling, vacuum breaker, anchor bolts