

QUALITY Fire-Fighting Pump

Compliance to NFPA 20

Type FSPA & CNPA



FEATURES / BENEFITS

- Non Overload design to ensure stable performance for all applications.
- Corrosion resistant materials used on the rotating parts
- Hydraulically balanced impeller extends bearing life and assures smoother operation
- Fully compliance to NFPA-20 and certified by Underwriters Laboratories (UL)

End Suction Pumps * (FSPA)

- Easy removal and maintenance, BPO (Back Pull Out) design permits all rotating elements to be removed without disconnecting suction and discharge pipe work.
- Top centreline discharge, foot support under casing for maximum resistance to misalignment and distortion from pipe loads.
- Flow rate capacity 250 up to 750 USGPM.
- Working pressure up to 250 psi with 250 lb. ANSI Flanges.

* UL File Number "EX15585"

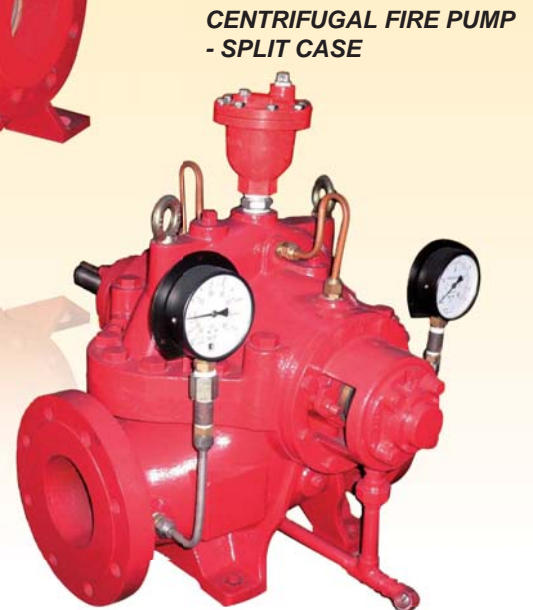
Horizontal Split Case Pumps ** (CNPA)

- Compact design for easy installation and space saving.
- Axially split casing allows the easy removal of the top casing for inspection and service.
- Available in horizontal or vertical configuration.
- Available in clockwise or counter clockwise rotation to simplify pump room layout.
- Flow rate capacity 500 up to 1250 USGPM.
- Working pressure up to 250 psi with 250 lb. ANSI Flanges.

** UL File Number "EX15584"



**CENTRIFUGAL FIRE PUMP
- END SUCTION**



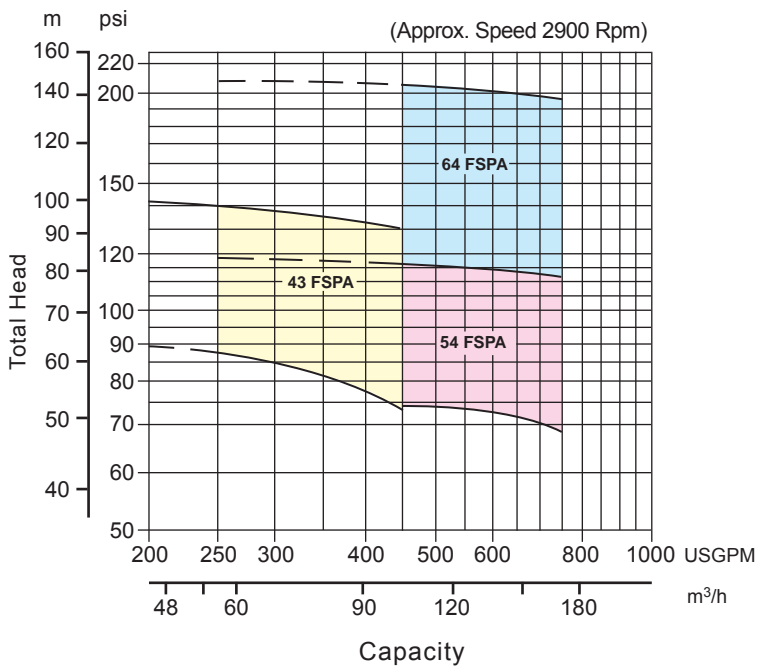
**CENTRIFUGAL FIRE PUMP
- SPLIT CASE**

SPECIFICATIONS

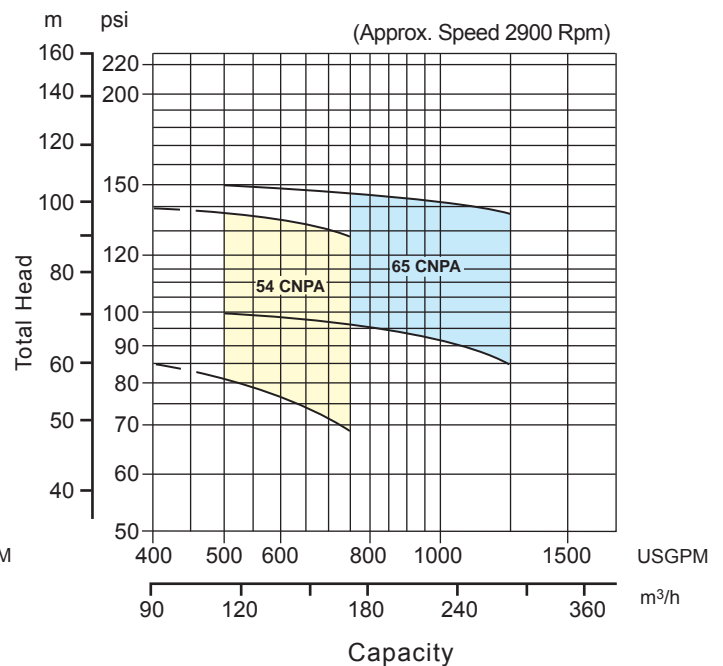
Item		Specifications
Liquid handled property		Clean water, 0 – 80 °C (32 to 176 °F)
Max.Working Pressure		250 psi
Approx. speed		2900rpm
Construction	Impeller	Enclosed
	Shaft seal	Gland Packing
	Flushing	Self Flushing
	Bearing	Shield Ball Bearing
Flange	Suction	ANSI 250
	Discharge	ANSI 250
Material	Casing	Ductile Cast Iron (FCD450) for FSPA model Cast Iron (FC250) for CNPA model
	Impeller	Bronze (CAC406)
	Shaft	Stainless Steel (SUS316)
	Shaft Sleeve	Bronze (CAC406)
	Gland Packing	Teflon (PTFE) Impregnated
Standard Accessories	Pressure Gauge	0–220psi
	Compound Gauge	-30 in Hg – 60 psi
	Air Relieve Valve	standard

SELECTION CHART

End Suction Pump type FSPA

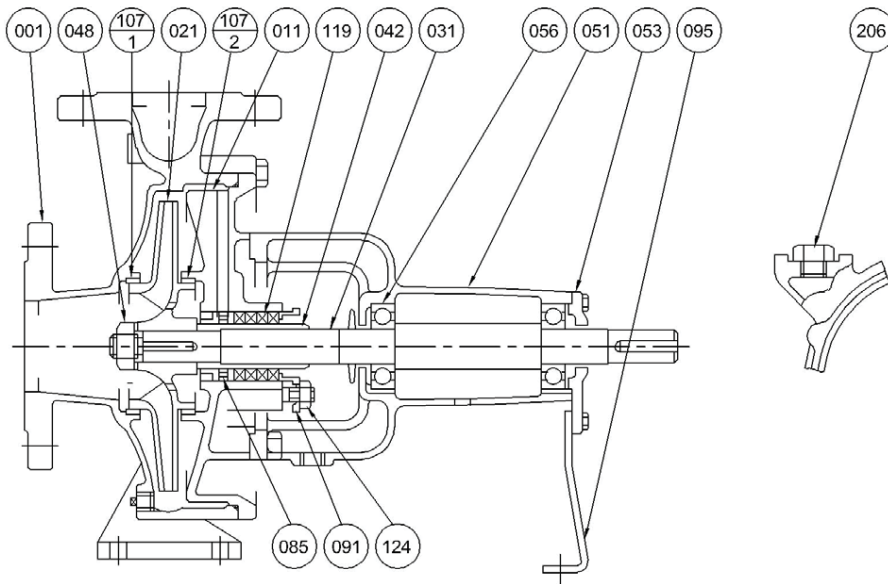


Split Case Pump type CNPA



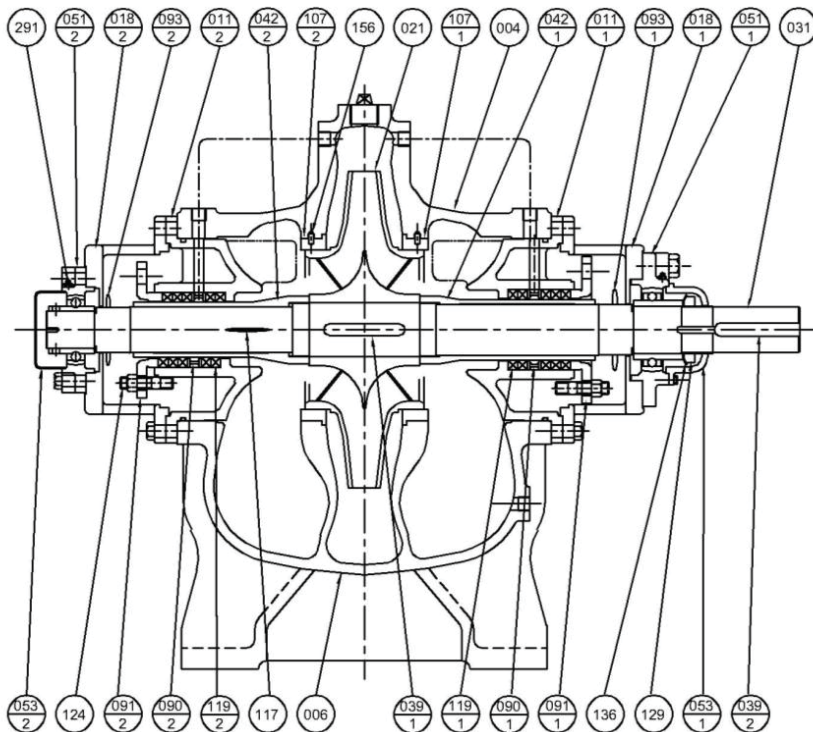
SECTIONAL VIEW

End Suction Pump type FSPA



No.	Part Name	Material	Qty
124	Gland bolt	Brass	2
056	Ball bearing	-	2
053	Bearing cover	Cast iron (FC200)	1
051	Bearing housing		
048	Impeller nut	Brass	1
031	Shaft	Stainless steel (SUS316)	
021	Impeller	Bronze (CAC406)	1
011	Casing cover	Ductile cast iron	
001	Casing	(FCD450)	4-5
119	Gland packing	Carbonized fibre	
091	Gland	Bronze (CAC406)	1
085	Lantern ring		
042	Shaft sleeve	Stainless steel (SUS304)	1
206	Priming plug		
107-2	Casing wear ring	Bronze (CAC406)	1
107-1	Casing wear ring		
095	Stay	Steel	

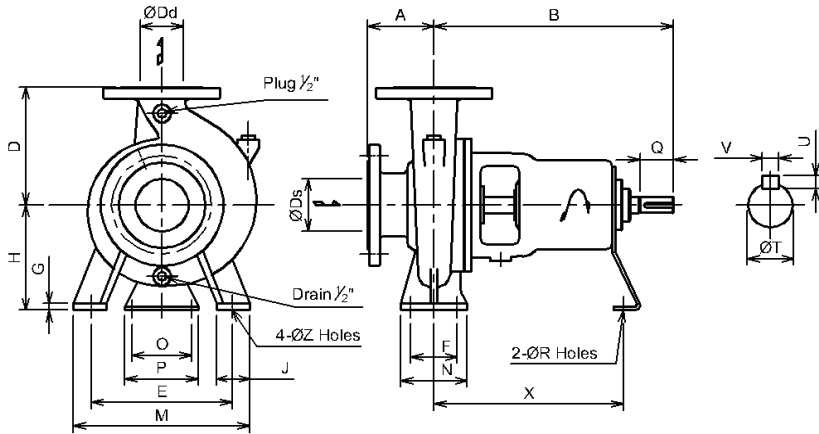
Horizontal Split Case Pump type CNPA



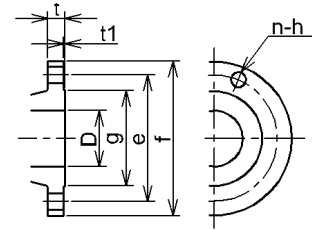
No.	Part Name	Material	Qty
053-2	Bearing cover (CCP side)	Cast iron (FC200)	1
053-1	Bearing cover (CP side)		
051-2	Bearing unit (CCP side)	Cast iron	1
051-1	Bearing unit (CP side)		
042-2	Shaft sleeve (CCP side)	Bronze (CAC406)	1
042-1	Shaft sleeve (CP side)		
039-2	Coupling key	Steel (S50C)	1
039-1	Impeller key	Stainless steel (SUS316)	
031	Shaft	Bronze (CAC406)	1
021	Impeller		
018-2	Bearing support (CCP side)	Cast iron (FC200)	1
018-1	Bearing support (CP side)		
011-2	Side cover (CCP side)	Cast iron (FC250)	1
011-1	Side cover (CP side)		
006	Casing lower half	Cast iron (FC250)	1
004	Casing upper half		
291	Grease nipple	C3604BD-F	2
156	Lock pin	SUS304	1
136	Bearing washer	Steel (SS400)	
129	Bearing nut		C3604BD-F
124	Gland bolt		
119-2	Gland packing (CCP side)	Carbonized fibre	5
119-1	Gland packing (CP side)		
117	Gasket (casing)	V#6500	1
107-2	Casing wear ring (CCP side)	Bronze (CAC406)	
107-1	Casing wear ring		Rubber
093-2	Deflector (CCP side)		
093-1	Deflector (CP side)	Bronze (CAC406)	1
091-2	Gland (CCP side)		
091-1	Gland (CP side)	Bronze (CAC406)	1
090-2	Lantern ring (CCP side)		
090-1	Lantern ring (CP side)		

DIMENSION

End Suction Pump type FSPA



Flange

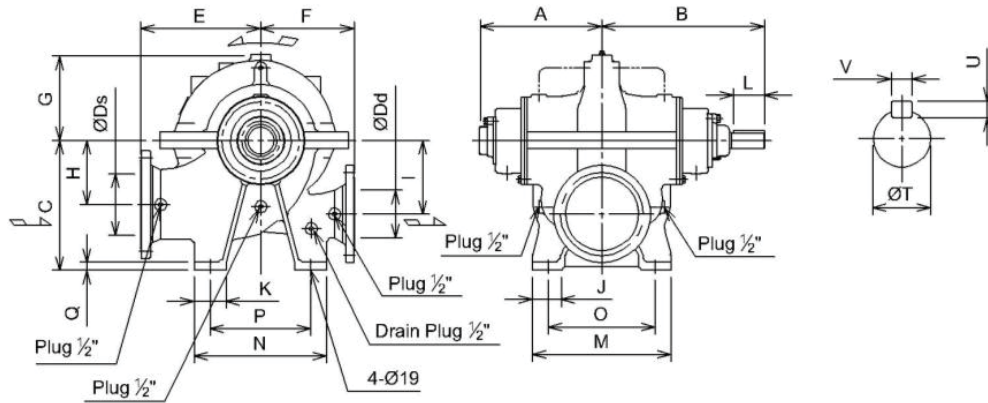


Unit: Inch (mm), unless otherwise stated

D	f	e	g	t1	t	n	h
3 (80)	8 1/4 (210)	6 5/8 (168)	5 11/16 (144)	1/16 (1.6)	1 1/8 (29)	8	7/8 (22)
4 (100)	10 (254)	7 7/8 (200)	6 5/8 (176)	1/16 (1.6)	1 1/4 (32)	8	7/8 (22)
5 (125)	11 (279)	9 1/4 (235)	8 5/16 (211)	1/16 (1.6)	1 3/8 (35)	8	7/8 (22)
6 (150)	12 1/2 (381)	10 5/8 (270)	9 11/16 (246)	1/16 (1.6)	1 7/16 (37)	12	7/8 (22)

Model	Size		Pump														Shaft					Wt kg
	Ds	Dd	A	B	C	D	E	F	G	J	M	N	O	P	R	X	Z	T	Q	U	V	
43 FSPA	4 (100)	3 (80)	3 15/16 (100)	14 3/16 (360)	7 7/8 (200)	9 7/8 (250)	11 (280)	4 3/4 (120)	9/16 (15)	3 1/8 (80)	14 3/16 (360)	6 5/16 (160)	4 5/16 (110)	5 7/8 (150)	11/16 (17)	11 1/4 (285)	3/4 (19)	1 1/4 (32)	3 1/8 (80)	5/16 (8)	3/8 (10)	70
54 FSPA	5 (125)	4 (100)	5 1/2 (140)	14 3/16 (360)	8 7/8 (225)	11 (280)	12 3/8 (315)	4 3/4 (120)	9/16 (15)	3 1/8 (80)	15 3/4 (400)	6 5/16 (160)	4 5/16 (110)	5 7/8 (150)	11/16 (17)	14 9/16 (370)	3/4 (19)	1 5/8 (42)	3 3/4 (95)	5/16 (8)	3/8 (12)	125
64 FSPA	6 (150)	4 (100)	5 1/2 (140)	20 7/8 (530)	9 7/8 (250)	12 3/8 (315)	12 3/8 (315)	4 3/4 (120)	9/16 (15)	3 1/8 (80)	15 3/4 (400)	6 5/16 (160)	4 5/16 (110)	5 7/8 (150)	11/16 (17)	14 9/16 (370)	3/4 (19)	1 5/8 (42)	3 3/4 (95)	5/16 (8)	3/8 (12)	146

Horizontal Split Case Pump type CNPA



Unit: Inch (mm), unless otherwise stated

Model	Size		Pump														Shaft					Wt kg
	Ds	Dd	A	B	C	E	F	G	H	I	J	K	M	N	O	P	Q	L	T	U	V	
54 CNPA	5 (125)	4 (100)	12 13/16 (326)	17 11/16 (450)	11 5/8 (295)	11 13/16 (300)	9 7/8 (250)	7 11/16 (195)	5 7/8 (150)	6 5/16 (160)	2 3/8 (60)	2 3/4 (70)	11 13/16 (300)	11 7/16 (290)	9 7/8 (250)	9 1/16 (230)	13/16 (20)	3 1/8 (80)	1 1/2 (38)	5/16 (8)	3/8 (10)	249
65 CNPA	6 (150)	5 (125)	14 5/16 (364)	19 7/8 (505)	13 15/16 (355)	13 (330)	10 1/4 (260)	8 13/16 (224)	7 1/2 (190)	7 1/2 (190)	3 1/8 (80)	3 9/16 (90)	14 15/16 (380)	14 3/16 (360)	12 3/16 (310)	10 5/8 (270)	1 (25)	3 9/16 (90)	1 7/8 (48)	3/8 (9)	9/16 (14)	283

*All specifications are subject to change without prior notice.



EBARA Pumps Malaysia Sdn Bhd
 6, Jalan TP3, UEP Subang Jaya Industrial Park,
 47620 Subang Jaya, Selangor, Malaysia.
 Tel : 03-8023 6622 Fax : 03-8023 9355
 Email : sales@ebara.com.my
 Website : www.ebara.com.my



Authorised dealer: