

QUALITY End Suction Volute Pump

(DIN 24256) Type FHA

APPLICATIONS

- Industrial use
- Water supply
- Hot and cold water circulation
- Swimming pool
- Sprinkling
- Air-conditioning

FEATURES

- Easy removal and maintenance, BPO (Back Pull Out) system allows all rotating element to be removed without disconnecting suction and discharge pipe work.
- Top centerline discharge, foot support under casing for maximum resistance to misalignment and distortion from pipe loads.
- Non-overload design to ensure trouble-free performance for all applications.
- Working pressure up to 16 bar.



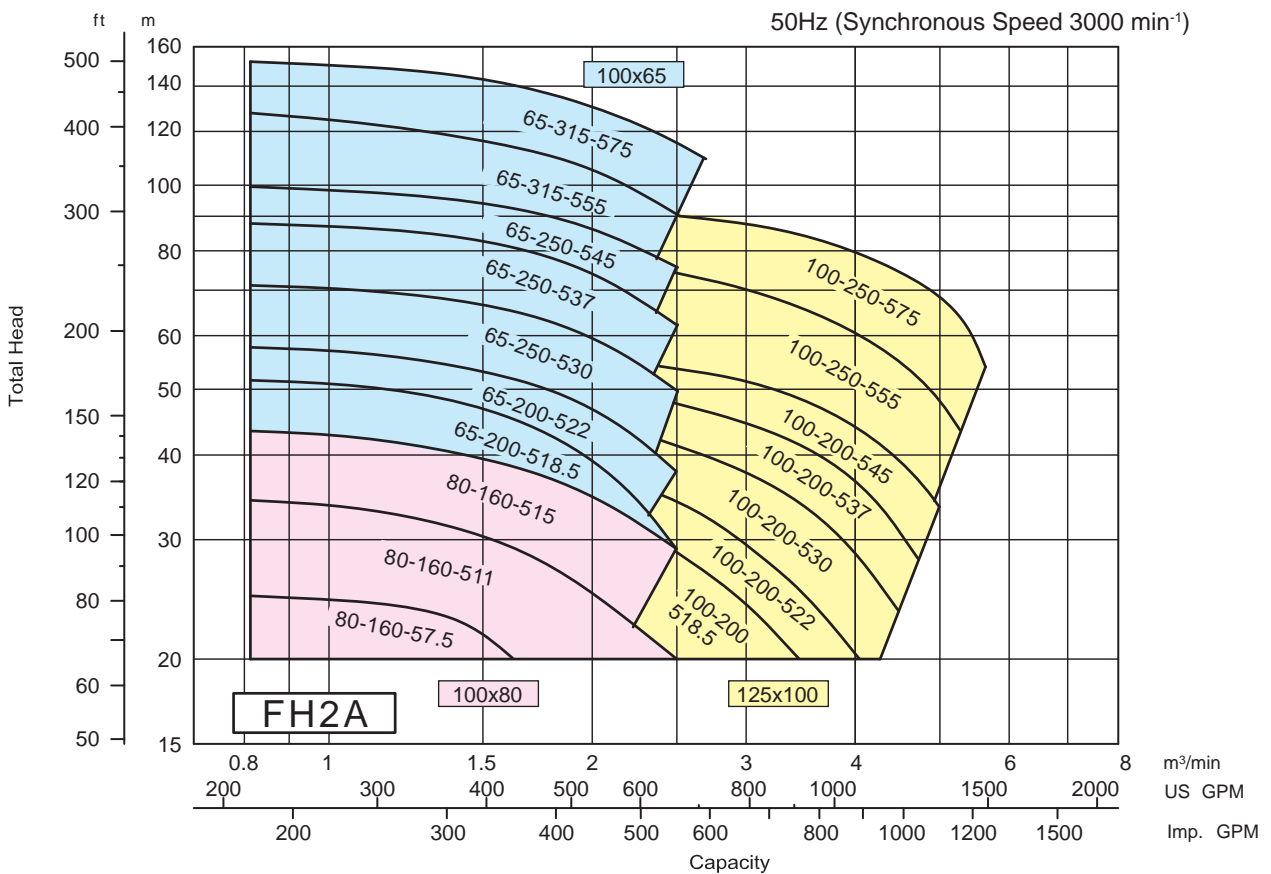
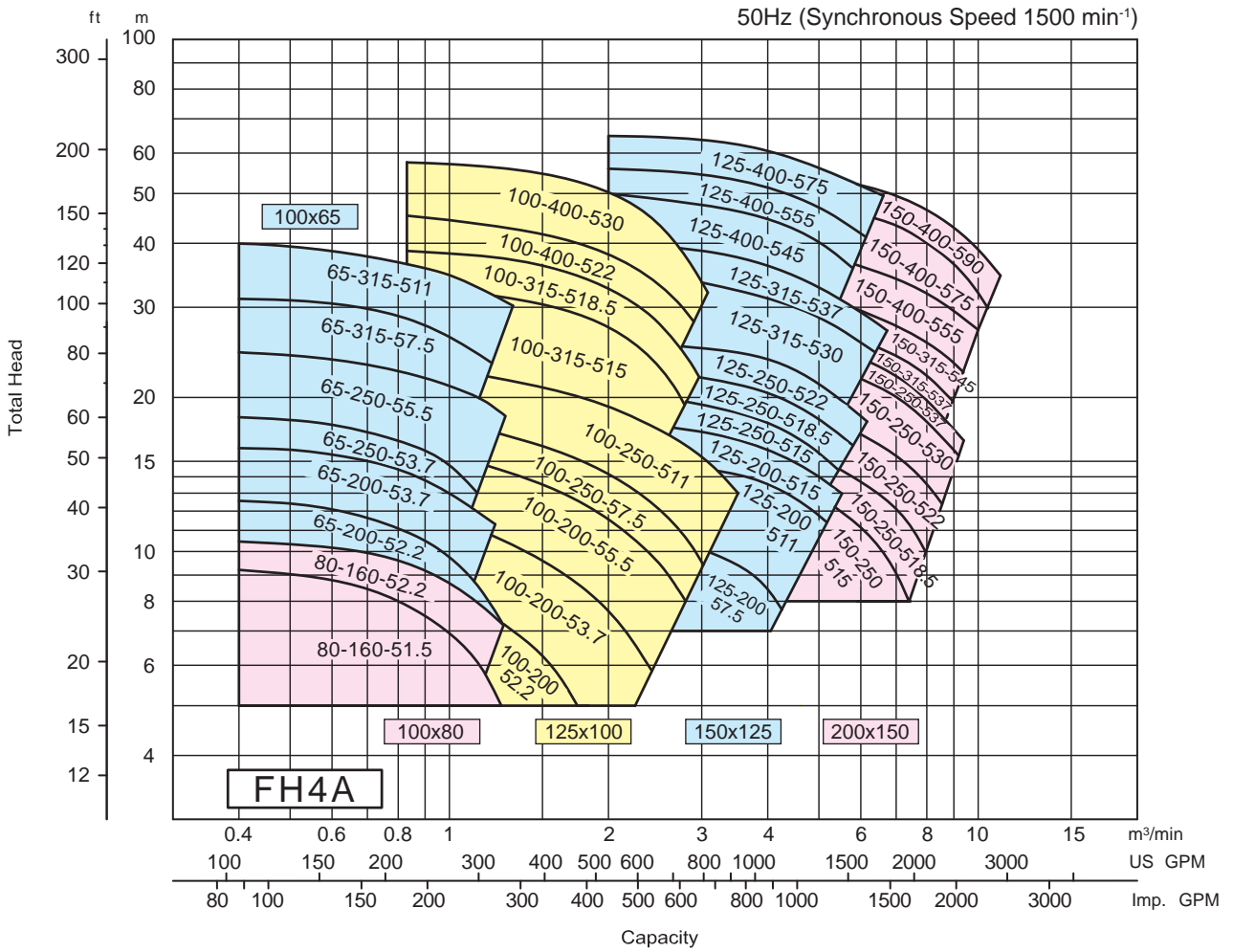
SPECIFICATIONS

Description		Standard		Optional	
		2 poles mode	4 poles model	2 poles model	4 poles model
Liquid	Name	Clean water		-	-
	Temperature	0 to 80 °C (32 to 176 °F)		-	-
Max. Working Pressure		16 bar (16.3 kgfcm ²)		-	-
Sync. Speed	50 Hz	3000 min ⁻¹	1500 min ⁻¹	-	-
Installation		Indoors		Outdoors	
Construction	Impeller	Enclosed		-	-
	Shaft seal	Mechanical seal		Gland Packing	
	Sealing	Self flushing		External flushing	
	Bearing	Sealed ball bearing		Oil bath	
Flange	Suction & Discharge	DIN PN-16		JIS 16RF, ANSI 250	
Material	Casing	Cast Iron		Ductile Cast Iron (FCD)	
	Impeller	Bronze Casting (CAC406 / BC6)		Cast Iron, Ductile Cast Iron (FCD)	
	Shaft	403 Stainless steel		304; 316 Stainless steel	
	Seal	Mechanical Seal: Ceramic/Carbon/NBR		Gland Packing : Teflon (PTFE) impregnated Mechanical Seal : SiC/SiC	
Accessories	Bare shaft	-	-	Priming funnel ; valve; Companion Flange	
	With motor	Common base, Coupling, Coupling guard		Priming funnel ; valve; Companion Flange	

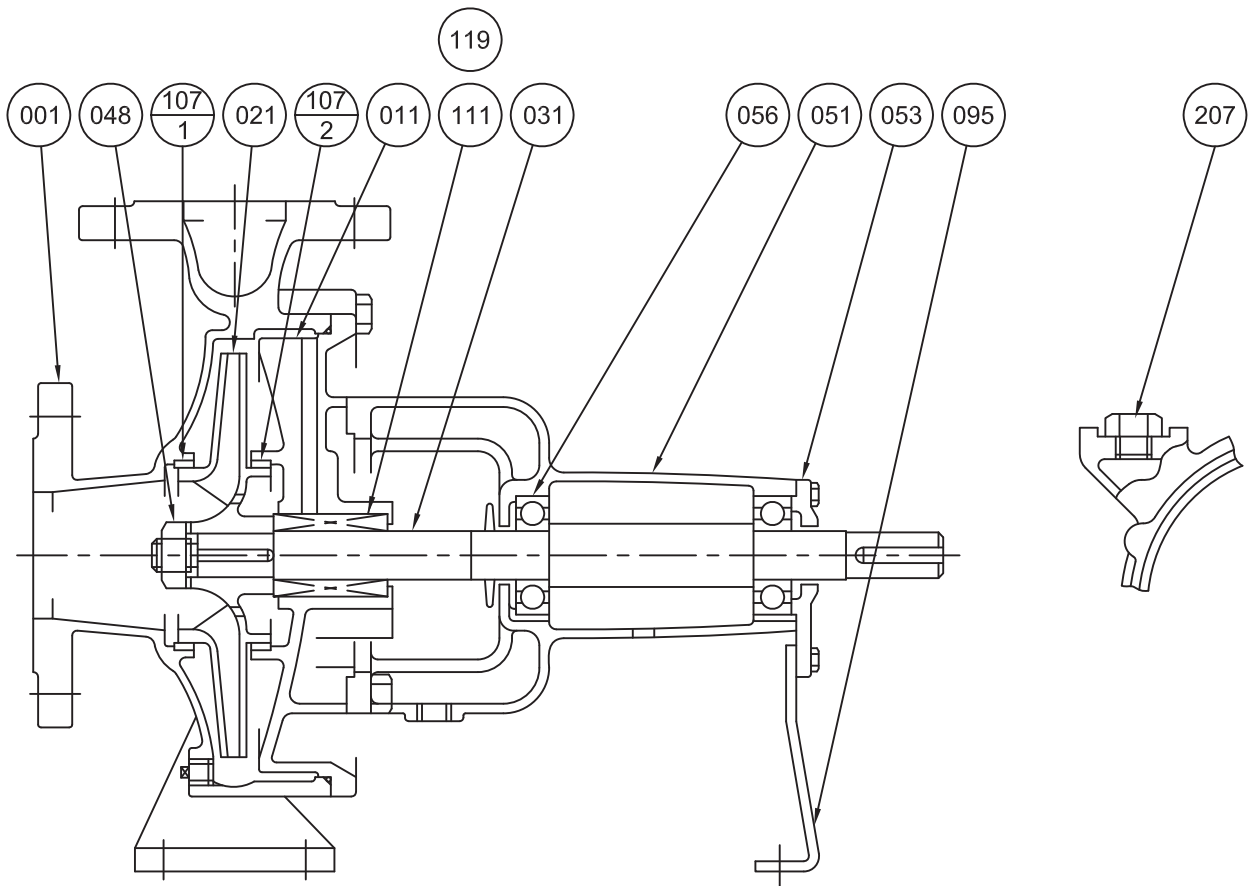
Note : Refer to the standard specification if you have purchased a standard model. We also offer pumps with optional features according to customer demand.

Be careful not to exceed the given specification on the use of your pump.

SELECTION CHART

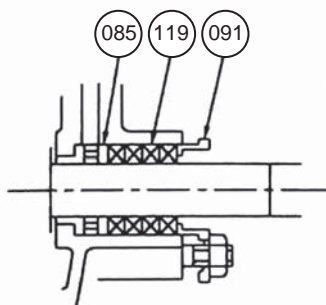
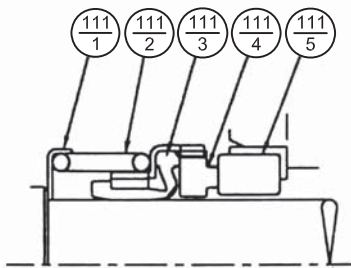


SECTIONAL VIEW



Mechanical Seal Type (Standard)

Gland Packing Type (Option)



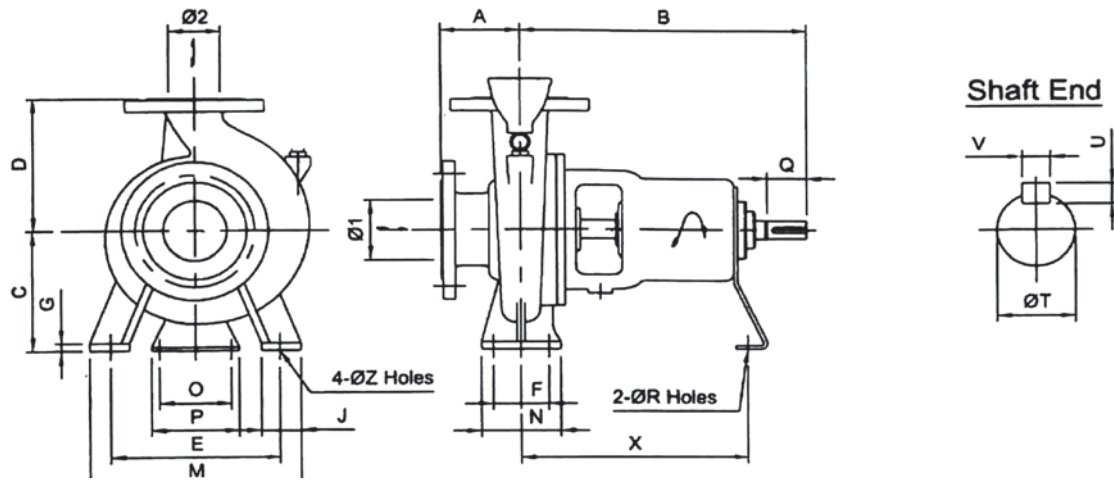
No.	Part Name	Standard Material	Qty
111-5	Seat	Ceramic	1
111-4	Face	Carbon	
111-3	Friction Ring	NBR	
111-2	Spring	Stainless Steel	
111-1	Spring Holder		

No.	Part Name	Standard Material	Qty
119	Gland Packing	Teflon impregnated	4 or 5
091	Gland	Bronze	1
085	Lantern Ring (some models only)		

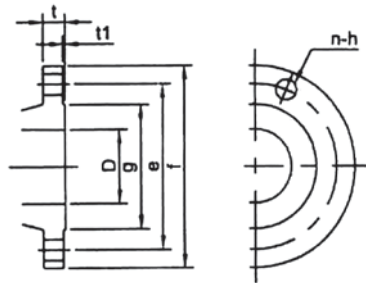
No.	Part Name	Standard Material	Qty
207	Water Inlet Plug	Steel	1
119	Gland Packing	-	-
111	Mechanical Seal	-	1
107-2	Casing Ring	Bronze	
107-1	Casing Ring		
095	Stay	Steel	1
056	Ball Bearing	-	2
053	Bearing Cover	Cast Iron	1
051	Bearing Housing		
048	Impeller Nut	Brass	
031	Shaft	Stainless Steel	
021	Impeller	Bronze	
011	Casing Cover	Cast Iron	
001	Casing		

Note : All listed data are for reference only
Please request to our local representative office for the details

DIMENSION - BARE SHAFT PUMP



Flange DIN PN-16



D mm	f mm	e mm	g mm	t1 mm	t mm	n	h mm
65	185	145	122	3	20	4	18
80	200	160	138	3	22	8	18
100	220	180	158	3	24	8	18
125	250	210	188	3	26	8	18
150	285	240	212	3	26	8	22
200	340	295	268	3	32	12	22

DIMENSIONAL TABLE

Model	Size		Pump														Shaft				wt kg	
	Ø1	Ø2	A	B	C	D	E	F	G	J	M	N	O	P	R	X	Z	T	Q	U		V
FHA 80-160	100	80	100	500	160	200	212	95	14	65	280	125	110	150	17	370	15	32	80	8	10	64
FHA 65-200	100	65	100	500	180	225	250	95	15	65	320	125	110	150	17	370	15	32	80	8	10	81
FHA 65-250	100	65	125	500	200	250	280	120	15	80	360	160	110	150	17	370	19	32	80	8	10	91
FHA 65-315	100	65	125	530	225	280	315	120	16	80	400	160	110	150	17	370	19	42	110	8	12	113
FHA 100-200	125	100	125	500	200	280	280	120	14	80	360	160	110	150	17	370	19	32	80	8	10	85
FHA 100-250	125	100	140	530	225	280	315	120	16	80	400	160	110	150	17	370	19	42	110	8	12	140
FHA 100-315	125	100	140	530	250	315	315	120	16	80	400	160	110	150	17	370	19	42	110	8	12	166
FHA 100-400	125	100	140	530	280	355	400	150	20	100	500	200	110	150	17	370	24	42	110	8	12	218
FHA 125-200	150	125	140	500	250	315	315	120	15	80	400	160	110	150	17	370	19	32	80	8	10	156
FHA 125-250	150	125	140	530	250	355	315	120	16	80	400	160	110	150	17	370	19	42	110	8	12	167
FHA 125-315	150	125	140	530	280	355	400	150	16	100	500	200	110	150	17	370	24	42	110	8	12	221
FHA 125-400	150	125	140	530	315	400	400	150	20	100	500	200	110	150	17	370	24	42	110	8	12	267
FHA 150-250	200	150	160	530	280	375	375	150	18	100	500	200	110	150	17	370	24	42	110	8	12	238
FHA 150-315	200	150	160	670	315	400	400	150	20	100	550	200	140	150	19	500	24	48	110	9	14	289
FHA 150-400	200	150	160	670	315	450	450	150	20	100	550	200	140	150	19	500	24	48	110	9	14	336

Unit : mm, unless otherwise stated

Note : *All specifications are subject to change without prior notice.

EBARA Pumps Malaysia Sdn Bhd
 6, Jalan TP3, UEP Subang Jaya Industrial Park,
 47620 Subang Jaya, Selangor, Malaysia.
 Tel : 03-8023 6622 Fax : 03-8023 9355
 Email : sales@ebaracom.my
 Website : www.ebaracom.my



Authorised dealer: