



Quality Self Priming Trash Pump

Type EFQT-EFQU

Ebara EFQ series pumps are available in a wide range of materials and sizes to handle solids and light slurries efficiently and effectively. The large volute allows for quick priming even with the casing only partially filled and an open suction line. Thus suitable for pumping water, wastewater, sewage & slurry.

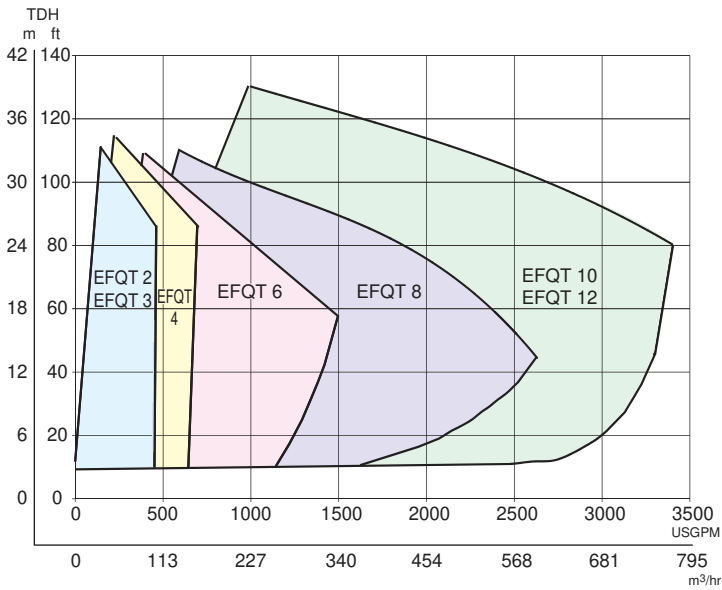
FEATURES / BENEFITS

- 2-vane semi-open impeller (EFQT) designed for solid handling up to 3" diameter solids. Multivane, semi-open impeller (EFQU) permits 1.25" diameter solids handling capability.
- External shim less wear plate adjustment, ensure easy maintenance works.
- Easy removal cover plates and rotating element, permits quick inspection and cleaning of pump without removing pipework.
- Cartridge Seals with Silicon Carbide/Silicon Carbide faces, allows for quick replacement and ease of installation.

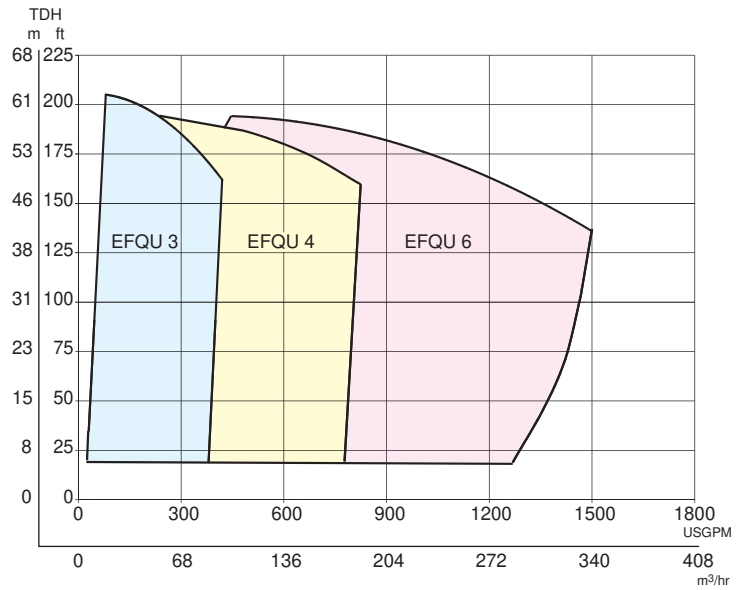


SELECTION CHART

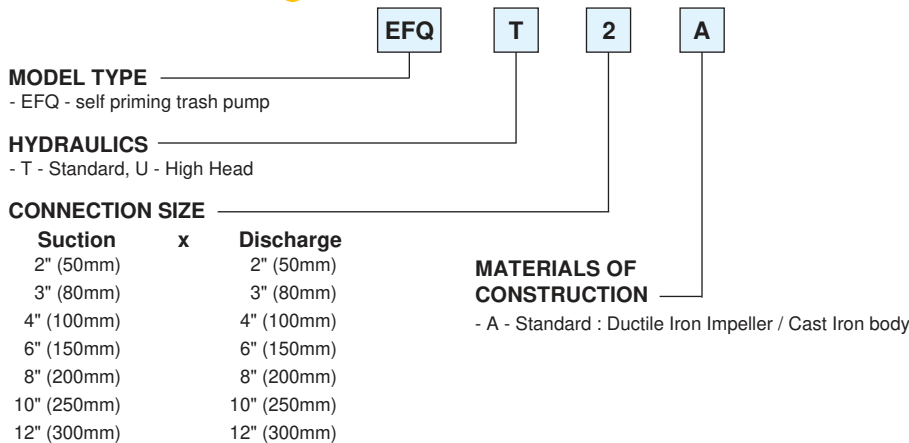
TYPE EFQT



TYPE EFQU



MODEL CODE

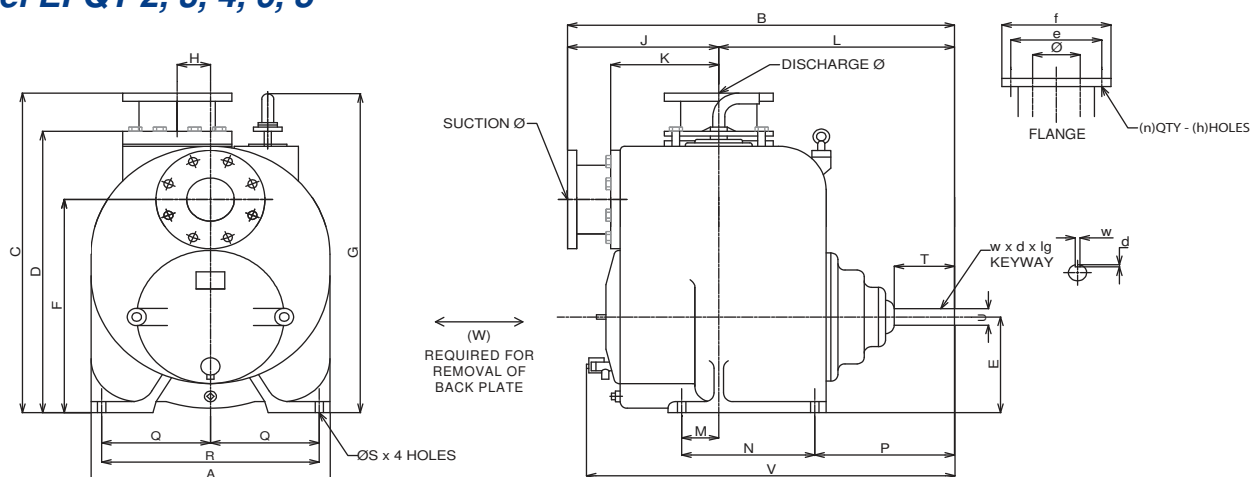


STANDARD SPECIFICATIONS

		EFQT	EFQU
Discharge Size/Connection		2 to 12 inch Flanged, F.F. ANSI	3 to 6 inch Flanged, F.F. ANSI
Range of HP		1 HP to 125 HP	1.5 HP to 75HP
Range of Performance	Capacity: Head:	to 780 m ³ /hr to 130 feet	to 340 m ³ /hr to 210 feet
Maximum Solid Diameter		3 inch	1.25 inch
Speed		650 to 2150 RPM	
Standard Materials	Casing	Cast Iron A48 CL 30	
	Impeller	Ductile iron A 60-40-18	
	Wear Plate	Carbon Steel SAE 1020	
	Cover Plate	Cast Iron A48 CL 30	
	Shaft	Alloy Steel 4140	
	Bearing Housing	Cast Iron A48 CL 30	
	Flap Valve	Reinforced Neoprene	
	Seal Sleeve	316 Stainless Steel	
	Flanges	Cast Iron A48 CL 30	
O-rings		Buna	
Mechanical Seal		Silicon Carbide/Silicon Carbide, Viton, 316 Stainless Steel	
Options	Tungsten Carbide Seals		
	Base-plate mounting, coupling guards		
	- Horizontal V-belt		
	- Vertical V-belt		
	- Flex coupled		
		TEFC or OPD motors	
		Diesel Engine operation, trailer or skid mounted	
		NPT Threaded suction and discharge connections	
*Note : Alternate construction materials available on request including 304SS, 316SS and CD4 MCU			

DIMENSION

Model EFQT 2, 3, 4, 6, 8



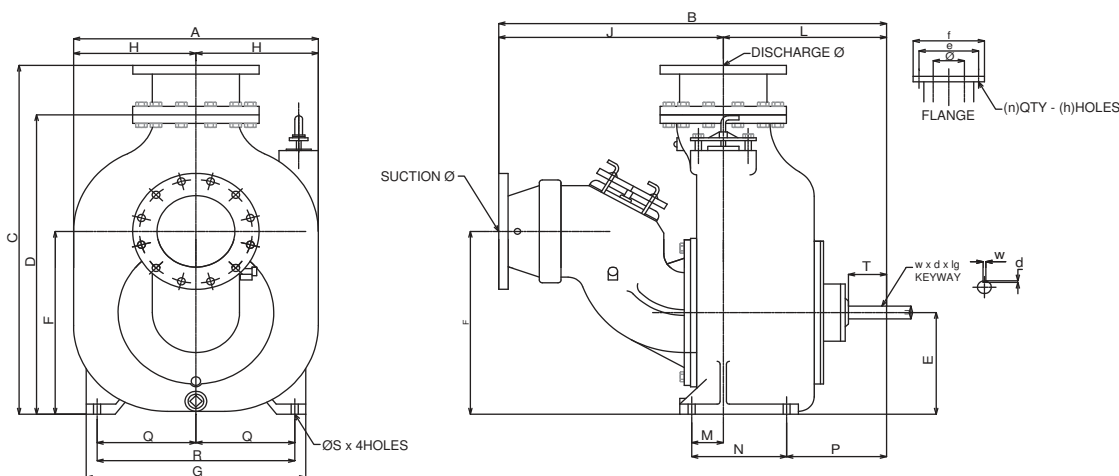
Unit: mm

FLANGE					KEYWAY		
Ø	e	f	n	h	w	d	lg
50	121	152	4	19	9.7	4.8	76
80	152	191	4	19	9.7	4.8	76
100	191	229	8	19	9.7	4.8	89
150	241	279	8	22	9.7	4.8	89
200	298	343	8	22	9.7	4.8	127

Unit: mm

SIZE Ø	MODEL	PUMP																				
		A	B	C	D	E	F	G	H	J	K	L	M	N	P	Q	R	S	T	U	V	W
50	EFQT-2	308	619	521	430	152	318	533	70	235	141	384	54	164	275	140	279	14.2	102	38.1	578	178
80	EFQT-3	432	732	687	565	191	432	670	70	293	185	436	76	229	284	197	394	17.5	102	38.1	692	191
100	EFQT-4	508	809	742	654	222	495	756	70	317	226	495	78	279	294	229	457	17.5	127	38.1	784	229
150	EFQT-6	578	902	896	759	257	568	854	70	406	268	495	78	279	294	264	527	17.5	127	38.1	817	267
200	EFQT-8	705	1023	1068	960	330	724	1010	70	413	321	610	102	305	407	318	635	22.4	170	44.5	981	330

Model EFQT 10



Unit: mm

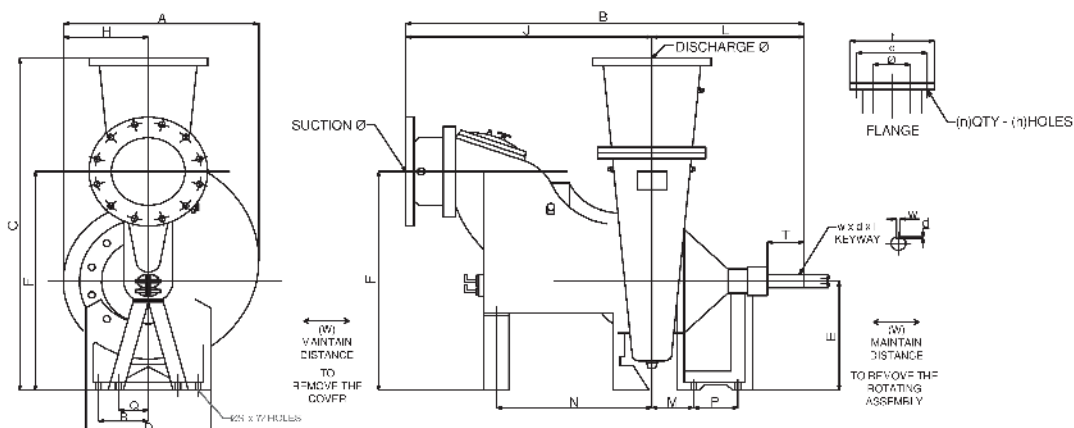
FLANGE					KEYWAY		
Ø	e	f	n	h	w	d	lg
250	362	406	12	25	9.7	4.8	95

Unit: mm

SIZE Ø	MODEL	PUMP																	
		A	B	C	D	E	F	G	H	J	L	M	N	P	Q	R	S	T	U
250	EFQT-10	786	1237	1221	1041	356	637	705	393	711	525	102	305	322	318	635	22.4	122	44.5

DIMENSION

Model EFQT 12



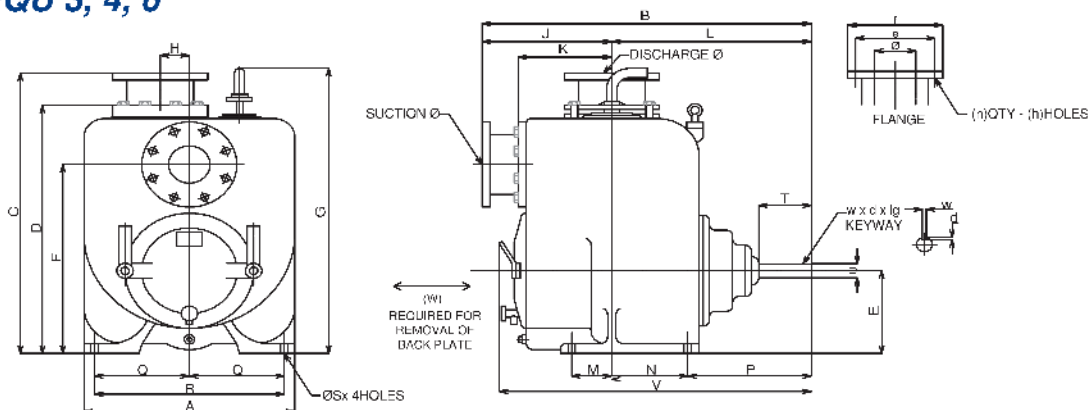
Unit: mm

FLANGE					KEYWAY		
Ø	e	f	n	h	w	d	lg
300	432	483	12	25	16	8	139

Unit: mm

SIZE Ø	MODEL	PUMP																		
		A	B	C	D	E	F	G	H	J	K	L	M	N	P	Q	R	S	T	U
300	EFQT-12	813	1622	1424	508	508	972	467	346	973	508	649	270	203	273	243	406	27	167	69.9

Model EFQU 3, 4, 6



Unit: mm

FLANGE					KEYWAY		
Ø	e	f	n	h	w	d	lg
80	152	191	4	19	10	5	76
100	191	229	8	19	9.7	4.8	89
150	241	279	8	22	9.7	4.8	90

Unit: mm

SIZE Ø	MODEL	PUMP																				
		A	B	C	D	E	F	G	H	J	K	L	M	N	P	Q	R	S	T	U	V	W
80	EFQU-3	432	727	687	565	191	432	671	70	292	185	435	76	152	283	191	381	17.5	103	38.1	667	467
100	EFQU-4	508	754	754	667	222	508	767	70	279	227	480	97	183	297	229	457	17.5	126	38.1	752	457
150	EFQU-6 (U6B60-B)	584	838	897	758	257	568	853	70	406	268	532	78	202	331	264	527	17.5	114	44.5	845	508

* Dimensional details are provided for reference only.
 * All specifications are subject to change without prior notice.



EBARA Pumps Malaysia Sdn Bhd
 6, Jalan TP3, UEP Subang Jaya Industrial Park,
 47620 Subang Jaya, Selangor, Malaysia.
 Tel : 03-8023 6622 Fax : 03-8023 9355
 Email : sales@ebaracom.my
 Website : www.ebaracom.my



Authorised dealer: