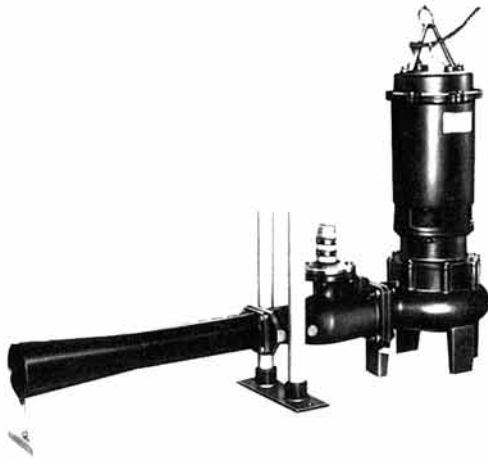
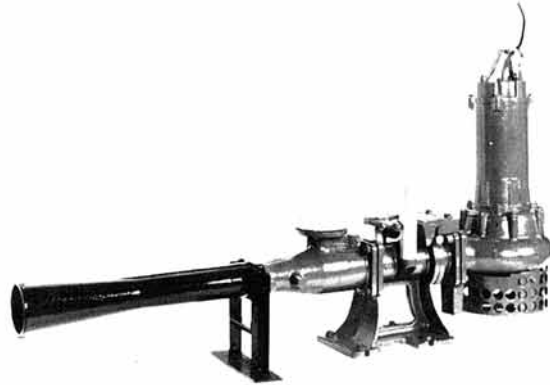


SUBMERSIBLE AERATOR – For Sewage Water & Contaminants



Monolithic type



QDC type

APPLICATIONS

- For preliminary or final aeration in sewage treatment (combined or separate treatment) plant.
- For preliminary or final aeration in industrial waste water treatment plant.
- For mixing / putrefaction prevention / scum prevention in sewage and septic vessels of all kinds.

FEATURES

- High oxygen dissolving efficiency.
- Provides super-fine air bubbles.
- High mixing power.
- Silent.
- Uses vortex pump that prevents clogged of foreign matter.
- Quick discharge connector (option) makes maintenance simple.

STANDARD ACCESSORIES

Monolithic type	Set components	○ Fixtures (not supplied with 0.75kW model)	1 set		
		· Base plate	SS	1	
		· Foundation bolts	SS	2	
		· Guide pipe fixtures (for DE) SS	2		
		· Guide pins	SS	2	
			· Diffuser support plate (with bolts) SUS304	1	
			○ Lifting chain	SBC (equivalent to steel) ... 1	
			○ Hose nipple for air pipe	FC200	2
			○ Hose band for hose nipple	SUS304	4
			○ Companion flange (with bolts) for hose nipple (not supplied with 0.75-2.2kW models) FC200	1	
		○ Submersible cable	0.75kW 6 m 1.5~5.5kW 10m		
		○ Ground surface nameplate	1		
QDC type	Set components	○ QDC	1 set		
		· QDC body	FC200	1	
		· Foundation bolts	SS	4	
		· Detachable flange	FC200	1	
		· Sliding guide	FC200	1	
			· Guide pipe support	SS	1
			· Guide pin	SS	4
			· Bolts	SUS420	1 set
			· Lifting chain	SBC (equivalent to steel) ... 1	
			○ Discharge bend (with bolts)	(same as standard discharge bend) 1	
		○ Pump strainer (with bolts)	SS	1	
		○ Companion flange (with bolts) for air pipe (not supplied with 0.75-2.2kW models) FC200	1		
		○ Submersible cable	1.5~5.5kW 10m		
		○ Ground surface nameplate	1		

Note :

Technical standards for electrical equipment require that the pump wiring be equipped with shut-off devices and electrical leakage breakers when pump is used. Users are requested to provide such devices.