



## ***Vertical Multistage Centrifugal Pump*** Type CVM

Vertical multistage centrifugal pumps manufactured with the great experience of EBARA in design and production of pumps. Reliable and quiet in operation.

### **APPLICATIONS**

- Pressure boosting plants
- General pressure increases
- Irrigation
- Washing plants
- General booster pump

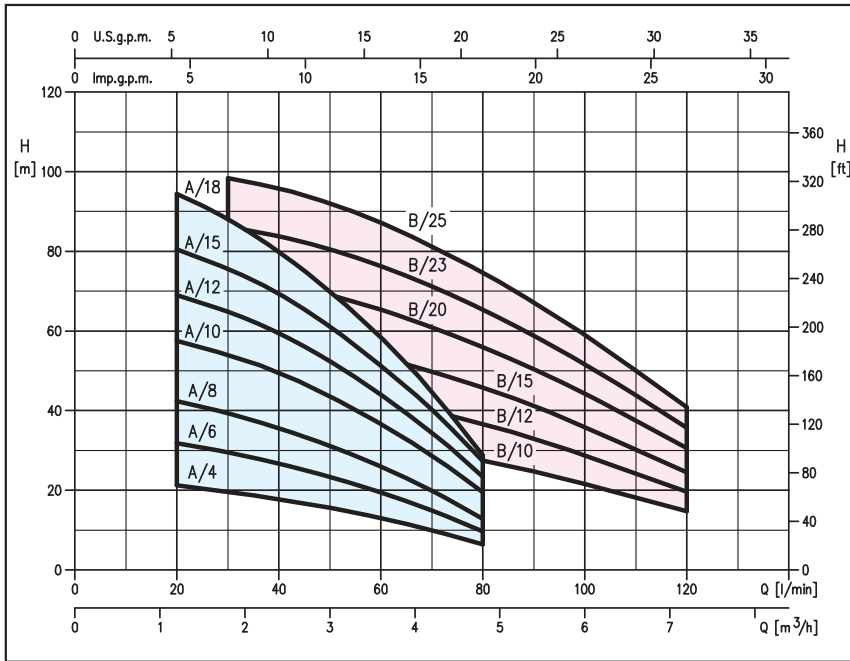
### **FEATURES**

- Reliable
- Silent operation
- Easy maintenance
- Electric pumps supplied with counter-flanges

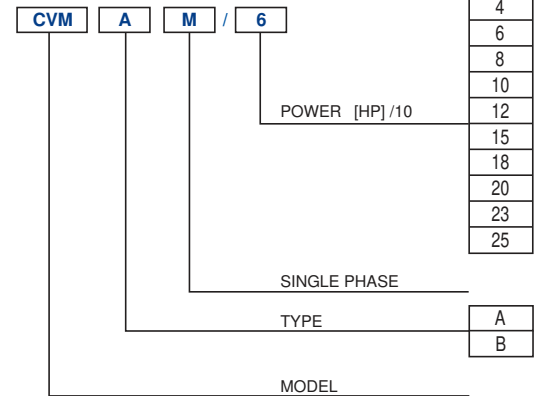


## PERFORMANCE CHART

(according to ISO 9906 Attachment A)

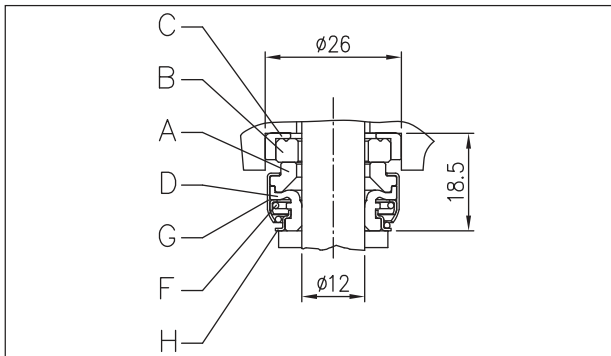


### Identification Code



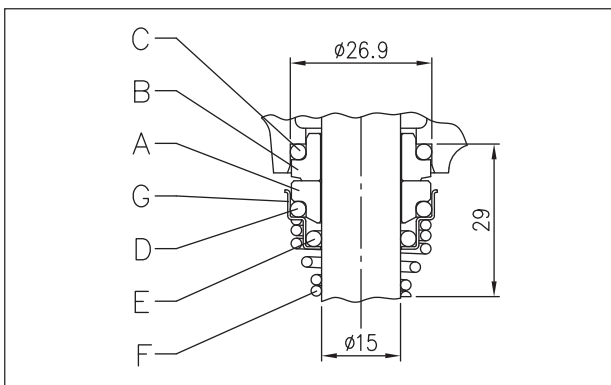
## MECHANICAL SEAL

for CVM up to 0.6 kW



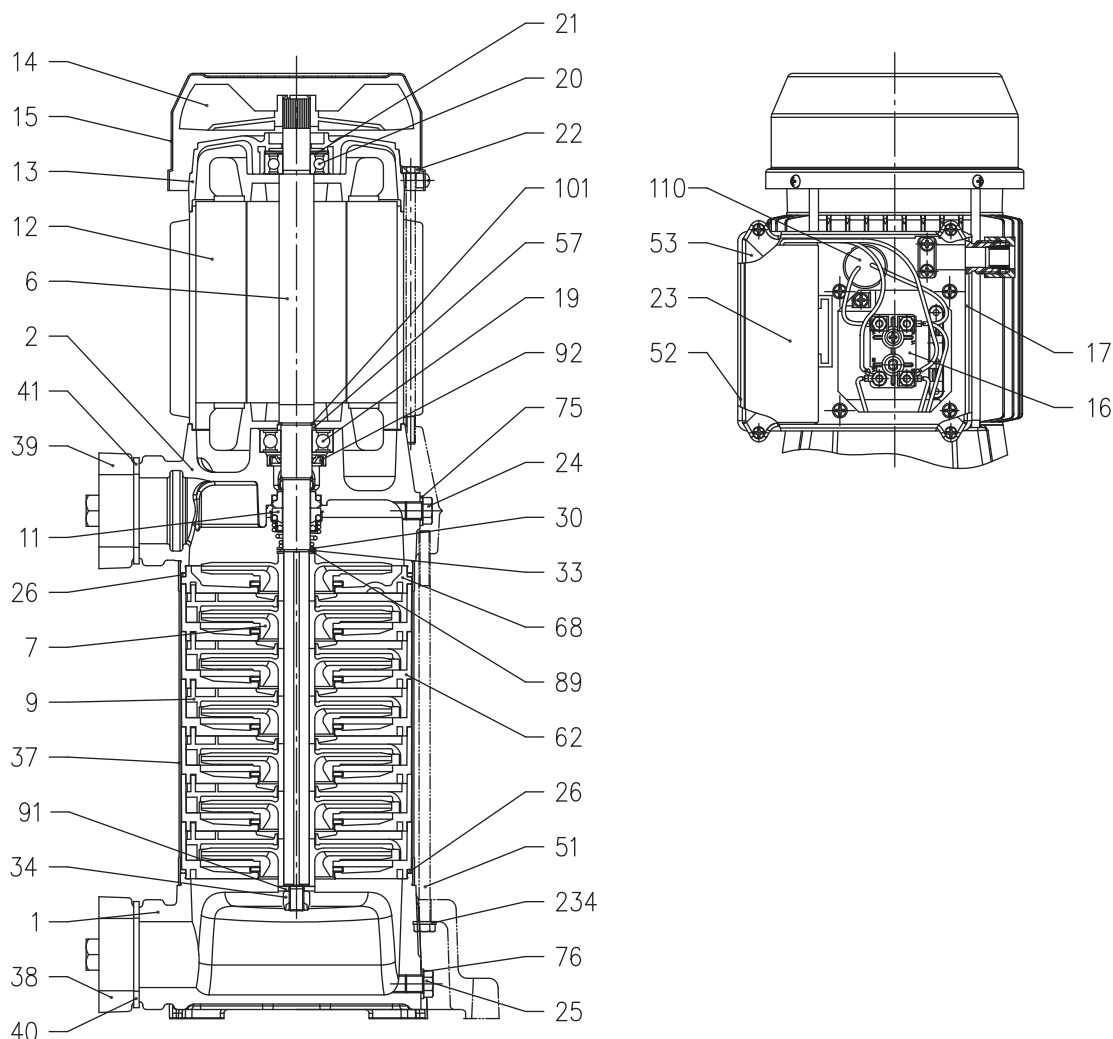
Ref.	Name	Material
A	Rotating part	Carbon
B	Fixed part	Ceramic
C	Gasket	NBR
D	Diaphragm	NBR
F	Spring	AISI 304
G	Structure / frame	AISI 304
H	Retainer ring	AISI 304

for CVM up to 0.75 kW and over



Ref.	Name	Material
A	Rotating part	Ceramic
B	Fixed part	Carbon
C	O-Ring	NBR
D	O-Ring	NBR
E	O-Ring	NBR
F	Spring	AISI 316
G	Structure / frame	AISI 304

## SECTIONAL VIEW

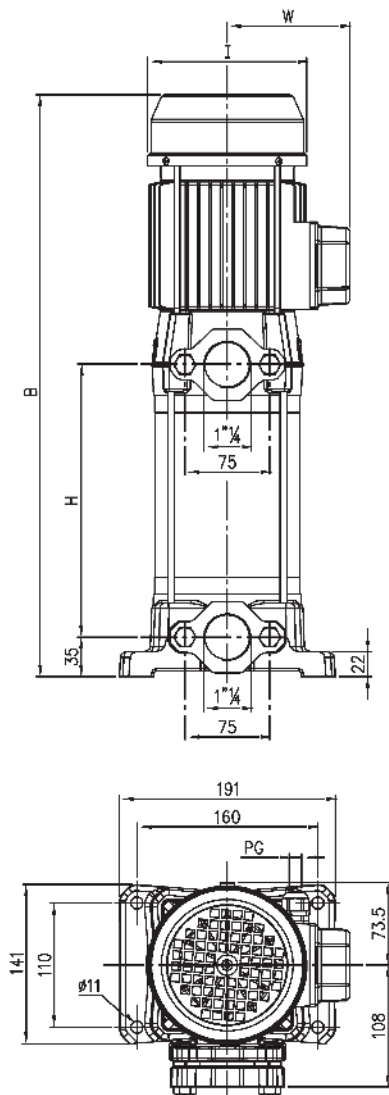


Ref.	Name	Material	Ref.	Name	Material
1	Pump body	Cast iron EN-GJL-200-EN 1561	33	Seeger ring	EN 1.4021 (AISI 420 (Dim. 12) EN 1.4301 (AISI 304 (Dim. 14)
2	Pump body support	Cast iron EN-GJL-200-EN 1561	34	Impeller nut	EN 1.4301 (AISI 304)
6	Shaft	EN 1.4005 (AISI 416)	37	Casing	EN 1.4301 (AISI 304)
7	Impeller	PPE+PS reinforced with fibreglass	38	Counter-flange	Cast iron EN-GJL-200-EN 1561
9	Nozzle	PPE+PS reinforced with fibreglass	39	Counter-flange	Cast iron EN-GJL-200-EN 1561
11	Mechanical seal	Carbon / Ceramic / NBR	40	Counter-flange gasket	NBR
12	Motor case	-	41	Counter-flange gasket	NBR
13	Motor cover	Aluminium	51	Pump tie-rod	Galvanised Fe P04
14	Fan	PA	52	Capacitor-holder box [2]	PP
15	Fan cover	Galvanised Fe P04	53	Capacitor-holder box cover [2]	PP
16	Terminal box	-	57	Spacer [3]	Steel C40
17	Terminal box cover [1]	Aluminium	62	Stage box	PPE+PS reinforced with fibreglass / PTFE
19	Bearing (pump side)	-	68	Stage	PPE+PS reinforced with fibreglass / PTFE
20	Bearing (motor side)	-	75	Washer	Aluminium
21	Adjusting ring	Steel C70	76	Washer	Aluminium
22	Motor tie-rod	Galvanised Fe 42	89	Washer	EN 1.4301 (AISI 304)
23	Capacitor [2]	-	91	Washer	EN 1.4301 (AISI 304)
24	Filler cap	OT 58 UNI 5705	92	Sealing ring	NBR
25	Drain plug	OT 58 UNI 5705	101	Seeger ring	EN 1.4301 (AISI 304)
26	O-Ring	NBR	110	Motorprotector [4]	-
30	Washer	EN 1.4301 (AISI 304)	234	Washer	Galvanised steel

[1]= For three phase only [2]= For single phase only [3]= For motor size 80 only

[4]= For motor size 71 and 80 only single phase

## DIMENSION



[1]= Three-phase only  
[2]= Single phase only

230V single phase	Model 230/400V three-phase	Motor Mec	B	H	I	W		PG		Weight [kg]	
						[2]	[1]	[2]	[1]	[2]	[1]
CVM AM/4	CVM A/4	63	336	112	124	101	91.5	11	11	11.0	11.0
CVM AM/6	CVM A/6	63	362	138	124	101	91.5	11	11	11.7	11.6
CVM AM/8	CVM A/8	63	388	164	124	101	91.5	11	11	12.7	12.6
CVM AM/10	CVM A/10	71	452	190	141	110.5	101	11	11	16.5	16.6
CVM AM/12	CVM A/12	71	478	216	141	110.5	101	11	11	17.5	17.6
CVM AM/15	CVM A/15	71	516	242	141	110.5	101	11	11	18.5	18.6
CVM AM/18	CVM A/18	80	565	268	159	136	120.5	13.5	11	21.2	21.2
CVM BM/10	CVM B/10	71	400	138	141	110.5	101	11	11	15.9	15.9
CVM BM/12	CVM B/12	71	426	164	141	110.5	101	11	11	16.8	16.7
CVM BM/15	CVM B/15	71	464	190	141	110.5	101	11	11	18.0	17.9
CVM BM/20	CVM B/20	80	513	216	159	134.5	120.5	13.5	11	21.3	21.3
CVM BM/23	CVM B/23	80	552	242	159	134.5	120.5	13.5	11	22.6	22.4
-	CVM B/25	80	578	268	159	-	120.5	-	11	-	23.7

\* Dimensional details are provided for reference only.

\* All specifications are subject to change without prior notice.



**EBARA Pumps Malaysia Sdn Bhd**  
6, Jalan TP3, UEP Subang Jaya Industrial Park,  
47620 Subang Jaya, Selangor, Malaysia.  
Tel : 03-8023 6622 Fax : 03-8023 9355  
Email : sales@ebaracom.my  
Website : www.ebaracom.my



Authorised dealer: