



Stainless Steel Centrifugal Pump

Type 3 SERIES

APPLICATIONS

- Water supply to civil, agricultural and industrial plants
- Pressure boosting
- Fire-fighting, heating systems and air-conditioning
- Moving industrial liquids
- Irrigation
- Refrigeration towers
- Swimming pools
- Emptying
- Washing plants

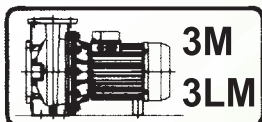
SPECIFICATIONS

- Maximum working pressure : 10 bar
- Maximum liquid temperature : from -10°C to +90°C, from -10°C to +110°C (L-H-HS versions)
from -20°C ÷ +120°C (E and ES version)

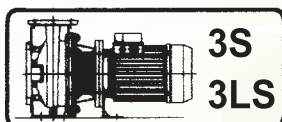
TECHNICAL FEATURES

- Robust hydraulic construction
- Versatile, capable of handling wide range of liquids AISI 304 as standard; AISI 316 available upon request
- Volute casing for high efficiency
- With AISI 304 pump foot as standard
- Compact design
- Wide range of performances with 2-4 poles motor
- Standard dimension as ISO EN 733
- Back pull out design - easy to dismantle, pump casing remain to the pipework
- Standard mechanical seal DIN 24960 being used
- Standard IEC motor (3S - 3P version)
- Other customize solutions to meet all your pumping needs

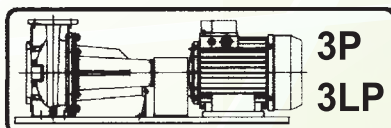
Available in 4 different versions, 2 and 4 poles



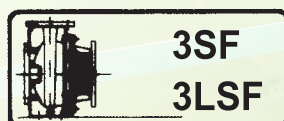
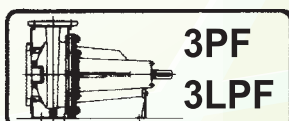
monobloc with extended motor shaft



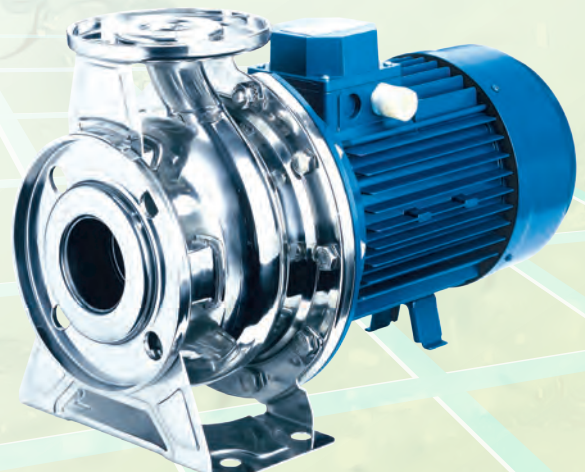
Monobloc with standard motor and rigid joint



On base, with standard motor and flexible coupling



Pump with bare shaft



TECHNICAL DATA

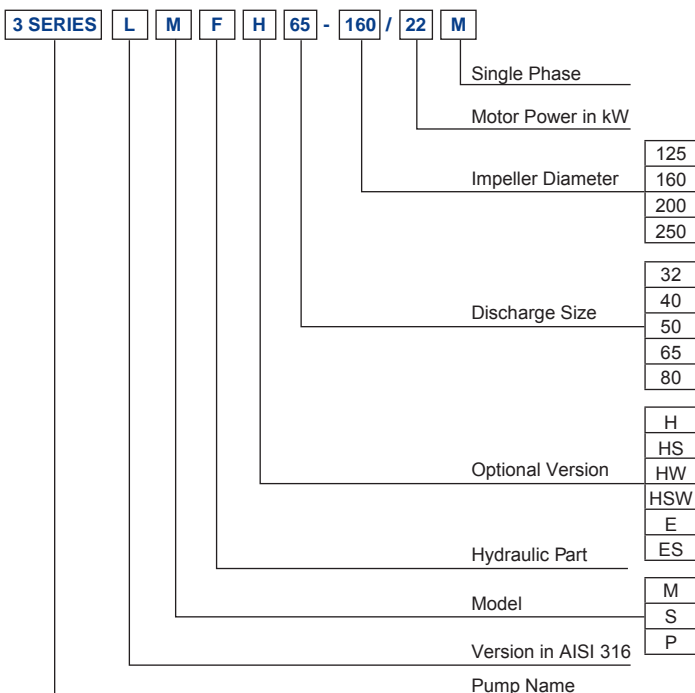
- High efficiency IE2 motors starting from 1.1kW up to 5.5 kW
- High efficiency IE3 motors:
 - 3(.)M(Z) from 7.5 kW up to 18.5 kW
 - 3(.)S(Z), 3(.)P IE3 from 1.1 kW up to 55 kW
- Self-ventilated 2 and 4 poles asynchronous motor
- Class of insulation F (B for high temperatures)
- IP 55 protection degree
- 230V ±10% single phase voltage, 50Hz
- 220-240/380-415V ±5% (up to 0.55kW included) three phase voltage, 50Hz for 3(L)M4 SERIES,
- 230/400V ±10% (from 0.75kW to 4kW included) three phase voltage, 50Hz for 3(L)M4 SERIES,
- 230/400V ±10% (up to 4kW included) three phase voltage, 50Hz for the rest of the range
- 400/690V ±10% (from 5.5 kW and above) three phase voltage, 50Hz
- Protection is user's responsibility

MATERIALS

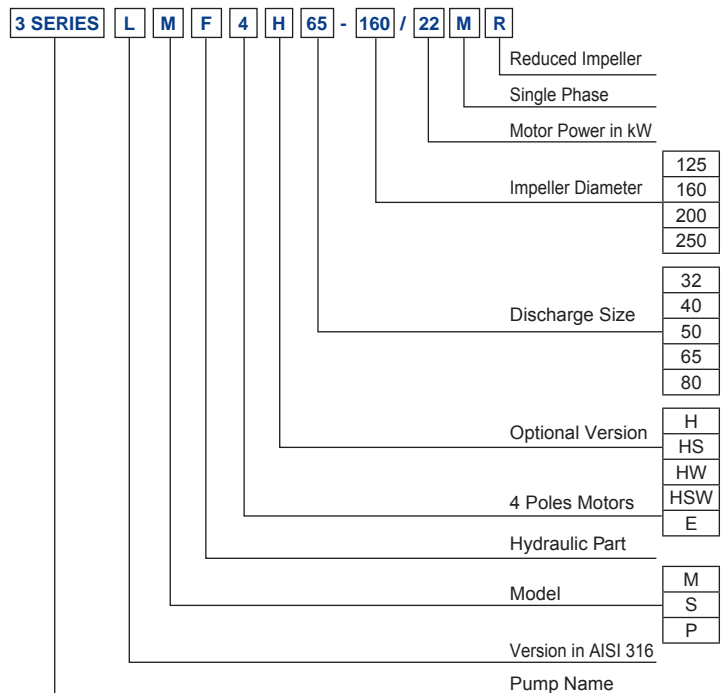
- Pump body and casing cover in:
 - AISI 304 for 3 Series 32-125/160/200
40-125/160/200
50-125/160
65-125/160/200
 - AISI 316L for 3L Series 32-125/160/200
40-125/160/200
50-125/160
65-125/160/200
 - AISI 316 microcasted for 3L Series 65-250
80-160/200/250
- Impeller in:
 - AISI 304 for 3 Series 32-125/160/200
40-125/160/200
50-125/160
 - AISI 316L for 3L Series 32-125/160/200
40-125/160/200
50-125/160
65-125/160/200
80-160/200/250
 - AISI 316 microcasted for 3 Series 65-125/160/200
3L Series 65-125/160/200
65-250
80-160/200/250
- Mechanical seal in:
 - Carbon/Ceramic/NBR for 3 Series 32-125/160/200
40-125/160/200
50-125/160
65-125/160/200
3L Series 32-125/160/200
40-125/160/200
50-125/160
65-125/160/200/250
80-160/200/250
 - SiC/SiC/FPM for 3L Series 32-125/160/200
40-125/160/200
50-125/160
65-125/160/200/250
80-160/200/250
 - Special mechanical seal available on request

IDENTIFICATION CODE

2 Poles



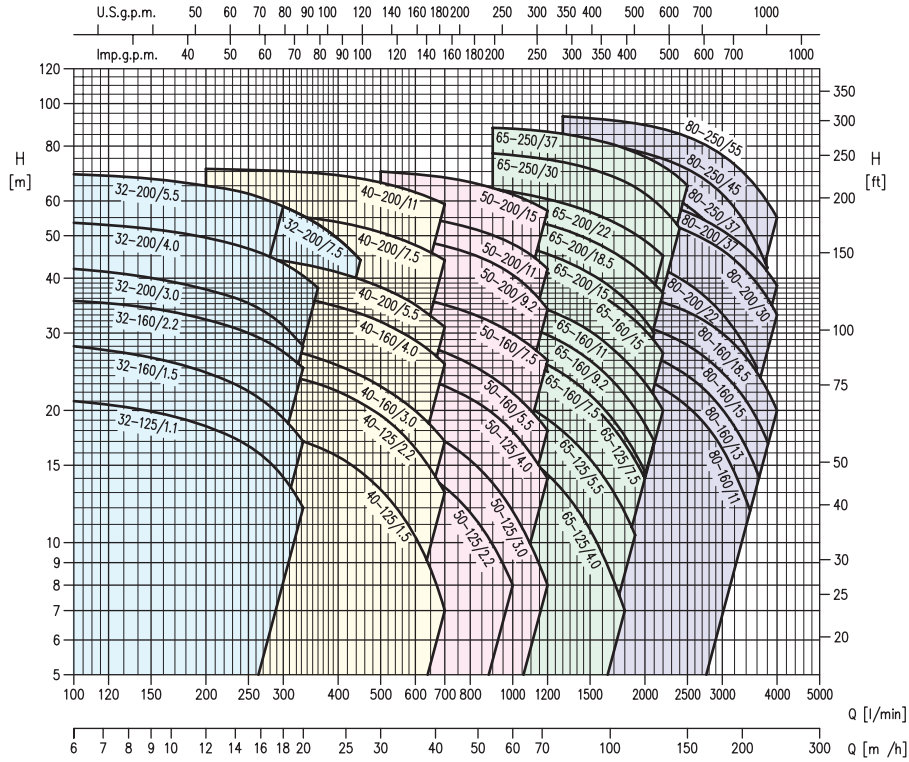
4 Poles



PERFORMANCE CHART

at 2900 min⁻¹
(according to
ISO 9906 Annex A)

2 Poles



32-40-50

Pump type	Power		Q=Flow rate															
	[kW]	[HP]	H=Head [m]															
			l/min m³/h	0	100	150	200	300	333	360	400	450	500	600	700	800	1000	1200
32-125/1.1(M) *	1.1	1.5	22.5	21	19.9	18.4	14.1	12	-	-	-	-	-	-	-	-	-	-
32-160/1.5(M) *	1.5	2	29.5	28	26.5	24.5	19.2	17	-	-	-	-	-	-	-	-	-	-
32-160/2.2(M) *	2.2	3	37	35.5	34	32	27	25	-	-	-	-	-	-	-	-	-	-
32-200/3.0	3	4	44	42	40	37.5	31	28	-	-	-	-	-	-	-	-	-	-
32-200/4.0	4	5.5	55	53.5	52	49.5	43.5	40.5	38	-	-	-	-	-	-	-	-	-
32-200/5.5	5.5	7.5	70.5	69	67.5	65	58.5	-	-	-	-	-	-	-	-	-	-	-
32-200/7.5	7.5	10	70.5	69	67.5	65	58.5	55.5	53	49	44	-	-	-	-	-	-	-
40-125/1.5(M) *	1.5	2	20	-	-	19	17.6	17	16.5	15.7	14.5	13.2	10.3	7	-	-	-	-
40-125/2.2(M) *	2.2	3	26.5	-	-	25.5	24	23.5	23	22	21	19.5	16.4	13	-	-	-	-
40-160/3.0	3	4	31	-	-	29.5	27.5	27	26.5	25.5	24	22.5	20	17	-	-	-	-
40-160/4.0	4	5.5	40	-	-	38.5	37	36	35.5	34.5	33	32	29	25.5	-	-	-	-
40-200/5.5	5.5	7.5	47	-	-	45.5	44	43	42.5	41	39.5	38	35	31	-	-	-	-
40-200/7.5	7.5	10	58	-	-	57	55.5	55	54.5	53.5	52.5	51	47.5	44	-	-	-	-
40-200/11	11	15	72	-	-	71	70	70	69.5	68.5	67.5	66	63	59	-	-	-	-
50-125/2.2(M) *	2.2	3	19	-	-	-	-	-	-	17.5	17	16.3	14.9	13.4	11.7	8	-	-
50-125/3.0	3	4	22	-	-	-	-	-	-	20.5	20	19.6	18.4	17	15.4	11.8	8	-
50-125/4.0	4	5.5	26.5	-	-	-	-	-	-	26	25.5	25	24	22.5	21.5	17.9	14	-
50-160/5.5	5.5	7.5	33	-	-	-	-	-	-	31	30.5	30	28.5	27	25.5	22	18	-
50-160/7.5	7.5	10	40	-	-	-	-	-	-	38.5	38	37.5	36	35	33.5	30	26	-
50-200/9.2	9.2	12.5	53	-	-	-	-	-	-	50	49	48.5	47.5	45.5	40.5	34	-	-
50-200/11	11	15	59	-	-	-	-	-	-	56	55	54	52	48	42	-	-	-
50-200/15	15	20	72	-	-	-	-	-	-	70	69	68	66	62	57	-	-	-

* Single phase version only for 3M type

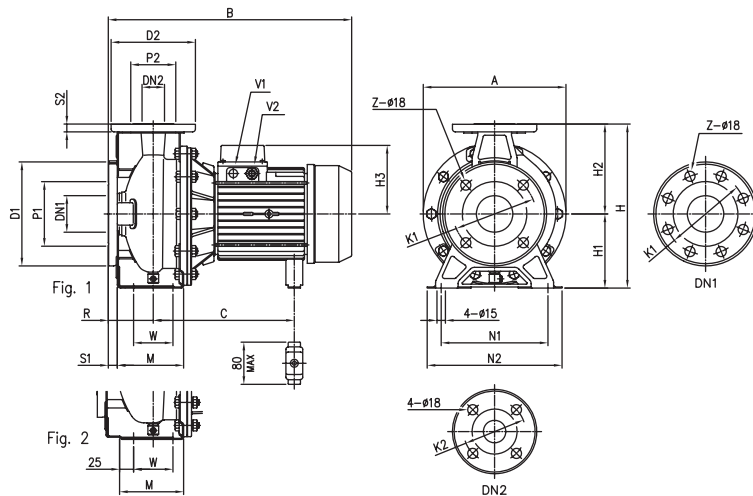
32-80

Pump type	Power		Q=Flow rate																			
	[kW]	[HP]	H=Head [m]																			
			l/min m³/h	0	600	700	900	1300	1500	1700	1900	2100	2200	2300	2400	2500	3000	3400	3600	3800	4000	
65-125/4.0	4	5.5	22.2	19.8	19	17.3	13.3	11	8.6	6.3	-	-	-	-	-	-	-	-	-	-	-	-
65-125/5.5	5.5	7.5	27	-	24	22.2	18	15.7	13.3	10.8	8	-	-	-	-	-	-	-	-	-	-	-
65-125/7.5	7.5	10	32	-	29.5	27.8	23.5	21.1	18.7	16.1	13.4	12	-	-	-	-	-	-	-	-	-	-
65-160/7.5	7.5	10	32	-	30	28.6	24.8	22.5	19.9	17.1	14.2	-	-	-	-	-	-	-	-	-	-	-
65-160/9.2	9.2	12.5	36.5	-	34.5	32.8	28.8	26.5	23.9	21.1	18.3	16.8	-	-	-	-	-	-	-	-	-	-
65-160/11	11	15	40.5	-	38.5	37.1	33.1	30.9	28.4	25.8	23	21.5	20	-	-	-	-	-	-	-	-	-
65-160/15	15	20	48	-	45.5	44	40	37.8	35.3	32.6	29.6	28	26.5	-	-	-	-	-	-	-	-	-
65-200/15	15	20	53.5	-	51	49	44	41.5	38.4	35.3	31.8	30	-	-	-	-	-	-	-	-	-	-
65-200/18.5	18.5	25	60.5	-	58.5	56.5	51.5	49	46	43	39.7	38.3	6.3	-	-	-	-	-	-	-	-	-
65-200/22	22	30	67	-	65.5	64	59.5	57	54	51	48	46.5	45	-	-	-	-	-	-	-	-	-
65-250/30	30	40	78	-	77	73.5	71	68	64.5	60	57.5	55	52	-	-	-	-	-	-	-	-	-
65-250/37	37	50	89	-	88	85.5	83	80.5	77.5	74	72	70	67.5	65	-	-	-	-	-	-	-	-
80-160/11	11	15	29	-	-	27.3	26.4	25.4	24.2	23	22.4	21.8	21.1	20.4	16.4	12.5	-	-	-	-	-	-
80-160/15R	15	20	32	-	-	30.5	29.7	28.8	27.5	26	25	24	23	22	18	14	-	-	-	-	-	-
80-160/15			35	-	-	34	33.3	32.5	31.5	30.5	30	29.4	28.8	28.1	24.4	21	19.1	17	-	-	-	-
80-160/18.5	18.5	25	40	-	-	39	38.4	37.6	36.7	35.7	35.2	34.7	34.1	33.5	30	26.4	24.4	22.3	20	-	-	-
80-200/22	22	30	50	-	-	48	47	45.5	44.5	43	42	41	40	39	33.2	27.8	25	-	-	-	-	-
80-200/30	30	40	60	-	-	58.5	58	57	56	54.5	54	53	52	51	46.5	41.5	39	36.1	33	-	-	-
80-200/37	37	50	66	-	-	64	63	62	61	59.5	59	58	57.5	56.5	51.5	47	44.5	41.5	38.5	-	-	-
80-250/47	37	50	73	-	-	71.5	70.5	68.5	66.5	64	63	61.5	60	58.5	48.5	38	-	-	-	-	-	-
80-250/45	45	60	84	-	-	82.5	81.5	80	78	76	75	73.5	72.5	71	62	53	48	42.5	-	-	-	-
80-250/55	55	75	95	-	-	93.5	92.5	91.5	90	88.5	87.5	86.5	85.5	84	76.5	68.5	64.5	60	55	-	-	-

DIMENSION

3(.)M 32, 40, 50, 65 up to 11kW

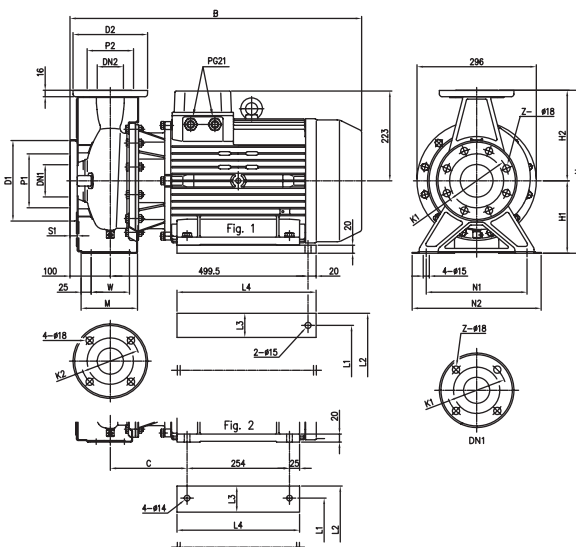
2 Poles



Model	Dimensions [mm]																			Weight [kg]															
	DN1 Ø	P1 Ø	K1 Ø	D1 Ø	S1	Z [1] [2]	DN2 Ø	P2 Ø	K2 Ø	D2 Ø	S2	Fig.	H	H1	H2	H3 [3] [4]	R	W	M	N1	N2	A	B [4] [3] [3*]	C [4] [3]	V1 [3]	V2 [3] [4]	[4]	[3] [1]	[2]						
32-125/1.1 (M)	50	95	125	165	16	4	-	32	75	100	140	14	1	252	112	140	124	141	80	70	114	140	190	213	408	407	431	219÷230	219÷230	-	PG 13.5	M20x1.5	19.6	24.1	24.1
32-160/1.5 (M)	50	95	125	165	16	4	-	32	75	100	140	14	1	292	132	160	124	141	80	70	118	190	240	254	408	407	431	219÷230	219÷230	-	PG 13.5	M20x1.5	22.5	27	27
32-160/2.2 (M)	50	95	125	165	16	4	-	32	75	100	140	14	1	292	132	160	124	141	80	70	118	190	240	254	408	432	431	219÷230	244÷255	-	PG 13.5	M20x1.5	27.7	28	28
32-200/3.0	50	95	125	165	16	4	-	32	75	100	140	14	1	340	160	180	124	-	80	70	119	190	240	296	-	471	471	-	244÷255	-	PG 13.5	-	-	35.1	35.1
32-200/4.0	50	95	125	165	16	4	-	32	75	100	140	14	1	340	160	180	141	-	80	70	119	190	240	296	-	494	494	-	253	-	PG 16	-	-	38.2	38.2
32-200/5.5	50	95	125	165	16	4	-	32	75	100	140	14	1	340	160	180	150	-	80	70	119	190	240	296	-	519	519	-	275	PG 13.5	PG 16	-	-	52.2	52.2
32-200/7.5	50	95	125	165	16	4	-	32	75	100	140	14	1	340	160	180	150	-	80	70	119	190	240	296	-	539	-	275	PG 13.5	PG 16	-	-	60.1	-	
40-125/1.5 (M)	65	115	145	185	16	4	-	40	80	110	150	14	1	252	112	140	124	141	80	70	114	160	210	213	408	407	431	219÷230	219÷230	-	PG 13.5	M20x1.5	20.1	24.6	24.6
40-125/2.2 (M)	65	115	145	185	16	4	-	40	80	110	150	14	1	252	112	140	124	141	80	70	114	160	210	213	408	432	431	219÷230	244÷255	-	PG 13.5	M20x1.5	25.8	26.1	26.1
40-160/3.0	65	115	145	185	16	4	-	40	80	110	150	14	1	292	132	160	124	-	80	70	118	190	240	254	-	471	471	-	244÷255	-	PG 13.5	-	-	26.6	26.6
40-160/4.0	65	115	145	185	16	4	-	40	80	110	150	14	1	292	132	160	141	-	80	70	118	190	240	254	-	494	494	-	253	-	PG 16	-	-	40.8	40.8
40-200/5.5	65	115	145	185	16	4	-	40	80	110	150	14	2	340	160	180	150	-	100	70	115	212	265	296	-	539	539	-	275	PG 13.5	PG 16	-	-	52.5	52.5
40-200/7.5	65	115	145	185	16	4	-	40	80	110	150	14	2	340	160	180	150	-	100	70	115	212	265	296	-	559	-	275	PG 13.5	PG 16	-	-	59.3	-	
40-200/11	65	115	145	185	16	4	-	40	80	110	150	14	2	340	160	180	178	-	100	70	115	212	265	296	-	595	-	359	PG 13.5	PG 21	-	-	69.6	-	
50-125/2.2 (M)	65	115	145	185	16	4	-	50	95	125	165	16	2	292	132	160	124	141	100	70	114	190	240	254	428	452	451	219÷230	244÷255	-	PG 13.5	M20x1.5	29.4	32	32
50-125/3.0	65	115	145	185	16	4	-	50	95	125	165	16	2	292	132	160	124	-	100	70	114	190	240	254	-	491	491	-	244÷255	-	PG 13.5	-	-	30.9	30.9
50-125/4.0	65	115	145	185	16	4	-	50	95	125	165	16	2	292	132	160	141	-	100	70	114	190	240	254	-	514	514	-	253	-	PG 16	-	-	40.9	40.9
50-160/5.5	65	115	145	185	16	4	-	50	95	125	165	16	2	340	160	180	150	-	100	70	115	212	265	296	-	539	539	-	275	PG 13.5	PG 16	-	-	46.5	46.5
50-160/7.5	65	115	145	185	16	4	-	50	95	125	165	16	2	340	160	180	150	-	100	70	115	212	265	296	-	559	-	275	PG 13.5	PG 16	-	-	58.6	-	
50-200/9.2	65	115	145	185	16	4	-	50	95	125	165	16	2	360	160	200	178	-	100	70	115	212	265	296	-	595	-	359	PG 13.5	PG 21	-	-	63.9	-	
50-200/11	65	115	145	185	16	4	-	50	95	125	165	16	2	360	160	200	178	-	100	70	115	212	265	296	-	595	-	359	PG 13.5	PG 21	-	-	69.6	-	
65-125/4	80	134	160	200	18	8	4	65	115	145	185	16	2	340	160	180	141	-	100	95	140	212	280	254	-	514	514	-	253	-	PG 16	-	-	37.7	37.7
65-125/5.5	80	134	160	200	18	8	4	65	115	145	185	16	2	340	160	180	150	-	100	95	140	212	280	254	-	539	539	-	275	PG 13.5	PG 16	-	-	48.7	48.7
65-125/7.5	80	134	160	200	18	8	4	65	115	145	185	16	2	340	160	180	150	-	100	95	140	212	280	254	-	559	-	275	PG 13.5	PG 16	-	-	52.1	-	
65-160/7.5	80	134	160	200	18	8	4	65	115	145	185	16	2	360	160	200	150	-	100	95	140	212	280	296	-	559	-	275	PG 13.5	PG 16	-	-	55.3	-	
65-160/9.2	80	134	160	200	18	8	4	65	115	145	185	16	2	360	160	200	178	-	100	95	140	212	280	296	-	595	-	359	PG 13.5	PG 21	-	-	61	-	
65-160/11	80	134	160	200	18	8	4	65	115	145	185	16	2	360	160	200	178	-	100	95	140	212	280	296	-	595	-	359	PG 13.5	PG 21	-	-	67.4	-	

[1] Standard [2] On request [3] Only for three-phase [4] Only for single-phase [*] Only for IE3 motors

3(.)M 50, 65 15 - 22kW



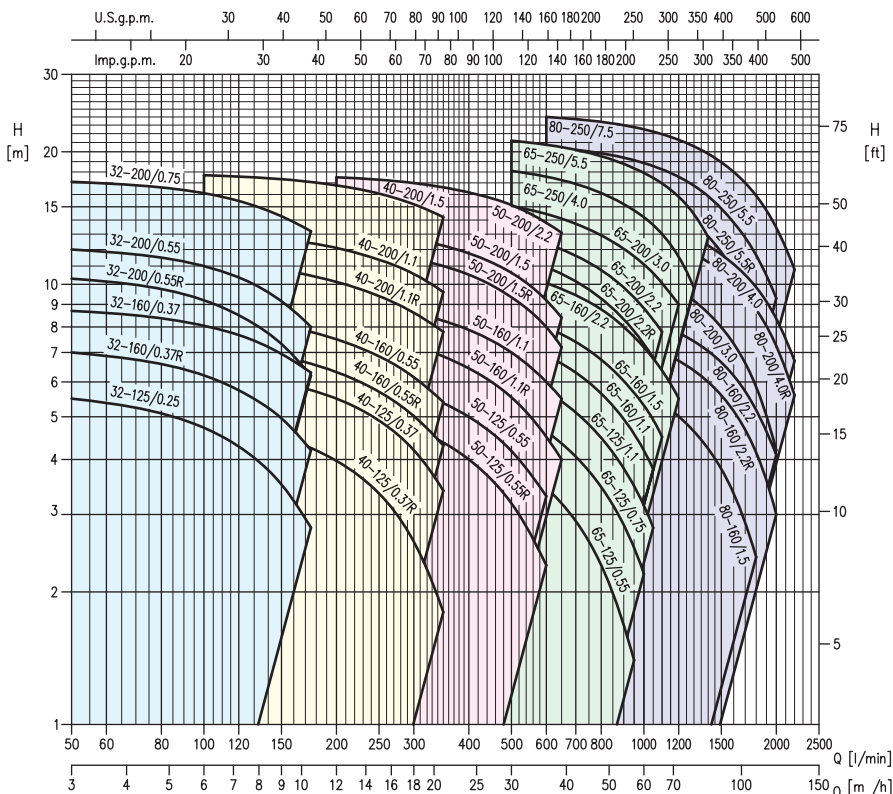
Model	Dimensions [mm]																			Weight [kg]										
	DN1 Ø	P1 Ø	K1 Ø	D1 Ø	S1	Z [1] [2]	DN2 Ø	P2 Ø	K2 Ø	D2 Ø	Fig.	H	H1	H2	W	M	N1	N2	B	C	L1	L2	L3	L4	[4]	[3]	[1]			
50-200/15	65	115	145	185	16	4	-	50	95	125	165	2	360	160	200	70	115	212	265	723	190.5	254	318	65	304	105.1	-	-	-	-
65-160/15	80	134	160	200	18	8	4	65	115	145	185	2	360	160	200	95	140	212	280	732	199.5	254	318	65	304	107.1	-	-	-	-
65-200/15	80	134	160	200	18	8	4	65	115	145	185	1	405	180	225	95	140	250	320	732	-	254	314	60	345	110.1	-	-	-	-
65-200/18.5	80	134	160	200	18	8	4	65	115	145	185	1	405	180	225	95	140	250	320	732	-	254	314	60	345	125.3	-	-	-	-
65-200/22	80	134	160	200	18	8	4	65	115	145	185	1	405	180	225	95	140	250	320	732	-	254	314	60	345	136.1	-	-	-	-

[1] Standard [2] On request [*] Only for IE3 motors

PERFORMANCE CHART

at 1450 min⁻¹
(according to
ISO 9906 Annex A)

4 Poles



32-40-50

Model	[HP]	[kW]	Q=Flow rate														
			l/min m³/h	50 3	100 6	150 9	175 10.5	200 12	250 15	300 18	350 21	400 24	500 30	600 36	650 39		
			H=Head (m)														
32-125/0.25	0.33	0.25	5.5	4.7	3.5	2.8	-	-	-	-	-	-	-	-	-	-	-
32-160/0.37R	0.5	0.37	7.0	6.2	5.0	4.2	-	-	-	-	-	-	-	-	-	-	-
32-160/0.37	0.5	0.37	8.7	8.1	7.0	6.3	-	-	-	-	-	-	-	-	-	-	-
32-200/0.55R	0.75	0.55	10.3	9.2	7.3	6.2	-	-	-	-	-	-	-	-	-	-	-
32-200/0.55	0.75	0.55	12.0	11.0	9.2	8.0	-	-	-	-	-	-	-	-	-	-	-
32-200/0.75	1	0.75	17.1	16.1	14.3	13.2	-	-	-	-	-	-	-	-	-	-	-
40-125/0.37R	0.5	0.37	-	4.8	4.5	4.3	4.0	3.4	2.6	1.8	-	-	-	-	-	-	-
40-125/0.37	0.5	0.37	-	6.3	6.0	5.8	5.5	4.9	4.2	3.4	-	-	-	-	-	-	-
40-160/0.55R	0.75	0.55	-	7.3	6.9	6.6	6.3	5.7	5.0	4.3	-	-	-	-	-	-	-
40-160/0.55	0.75	0.55	-	8.6	8.1	7.8	7.5	6.9	6.2	5.4	-	-	-	-	-	-	-
40-200/1.1R	1.5	1.1	-	11.2	10.8	10.5	10.1	9.4	8.6	7.8	-	-	-	-	-	-	-
40-200/1.1	1.5	1.1	-	13.2	12.7	12.4	12.1	11.4	10.6	9.6	-	-	-	-	-	-	-
40-200/1.5	2	1.5	-	17.7	17.3	17.1	16.8	16.1	15.2	14.2	-	-	-	-	-	-	-
50-125/0.55R	0.75	0.55	-	-	-	-	-	6.2	5.0	4.7	4.4	4.0	3.2	2.3	-	-	-
50-125/0.55	0.75	0.55	-	-	-	-	-	5.2	6.0	5.7	5.4	5.0	4.2	3.3	-	-	-
50-160/1.1R	1.5	1.1	-	-	-	-	-	7.8	7.6	7.2	6.9	6.4	5.5	4.5	4.0	-	-
50-160/1.1	1.5	1.1	-	-	-	-	-	9.1	8.9	8.6	8.3	7.9	7.0	6.0	5.5	-	-
50-200/1.5R	2	1.5	-	-	-	-	-	12.1	11.8	11.4	11.0	10.5	9.3	8.0	7.2	-	-
50-200/1.5	2	1.5	-	-	-	-	-	13.3	13.0	12.7	12.2	11.8	10.6	9.2	8.4	-	-
50-200/2.2	3	2.2	-	-	-	-	-	17.5	17.3	17.0	16.6	16.2	15.1	13.8	13.1	-	-

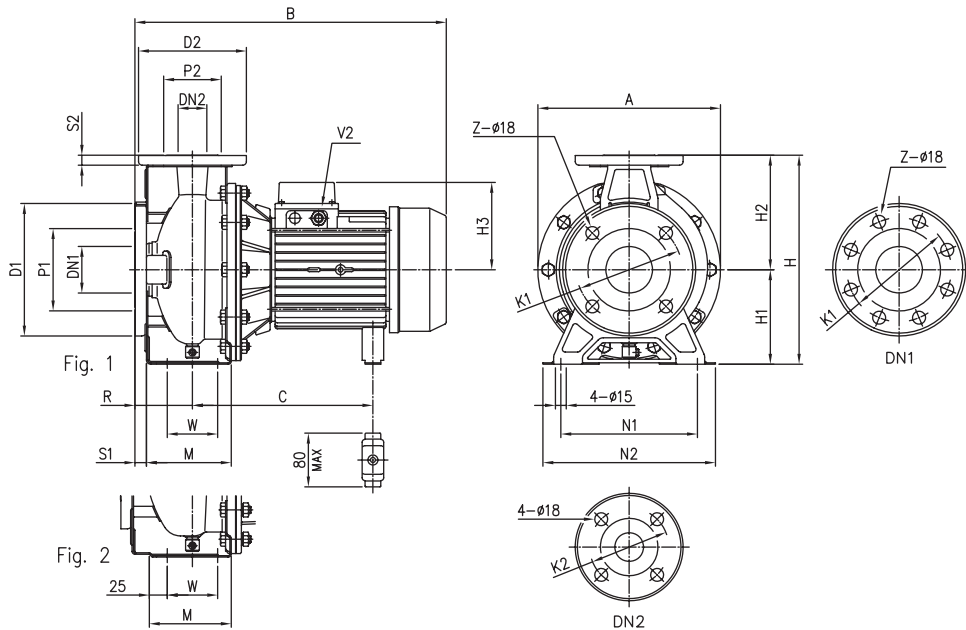
65-80

Model	[HP]	[kW]	Q=Flow rate																
			l/min m³/h	300 18	350 21	500 30	600 36	800 48	950 57	1000 60	1050 63	1100 66	1200 72	1300 78	1400 84	1600 96	1800 108	2000 120	2200 132
			H=Head (m)																
65-125/0.55	0.75	0.55	4.8	4.6	4.0	3.5	2.3	1.4	-	-	-	-	-	-	-	-	-	-	-
65-125/0.75	1	0.75	6.0	5.8	5.2	4.6	3.5	2.5	2.2	-	-	-	-	-	-	-	-	-	-
65-125/1.1	1.5	1.1	7.2	7.0	6.3	5.7	4.5	3.5	3.2	2.8	-	-	-	-	-	-	-	-	-
65-160/1.1	1.5	1.1	-	8.1	7.4	6.9	5.7	4.6	4.2	3.8	-	-	-	-	-	-	-	-	-
65-160/1.5	2	1.5	-	9.2	8.5	8.0	6.7	5.7	5.3	4.9	4.5	-	-	-	-	-	-	-	-
65-160/2.2	3	2.2	-	11.3	10.6	10.1	8.8	7.6	7.2	6.8	6.4	5.5	-	-	-	-	-	-	-
65-200/2.2R	3	2.2	-	12.4	11.6	10.9	9.3	7.8	7.3	6.8	-	-	-	-	-	-	-	-	-
65-200/2.2	3	2.2	-	13.9	13.0	12.4	10.8	9.3	8.8	8.3	7.8	-	-	-	-	-	-	-	-
65-200/3	4	3	-	15.8	15.1	14.4	12.9	11.6	11.1	10.6	10.1	9.0	-	-	-	-	-	-	-
65-250/4	5.5	4	-	-	18.1	17.6	16.1	14.7	14.2	13.7	13.0	11.6	9.8	-	-	-	-	-	-
65-250/5.5	7.5	5.5	-	-	21.2	20.8	19.6	18.4	17.9	17.5	17.0	15.8	14.4	12.8	-	-	-	-	-
80-160/1.5	2	1.5	-	-	-	6.8	6.3	5.9	5.7	5.6	5.4	5.0	4.6	4.2	3.4	2.4	-	-	-
80-160/2.2R	3	2.2	-	-	-	8.1	7.8	7.4	7.3	7.1	7.0	6.7	6.4	6.0	5.2	4.2	3.0	-	-
80-160/2.2	3	2.2	-	-	-	9.1	8.8	8.4	8.3	8.2	8.0	7.8	7.4	7.1	6.2	5.2	4.1	-	-
80-200/3	4	3	-	-	-	12.0	11.5	10.9	10.7	10.4	10.2	9.7	9.2	8.6	7.3	5.9	4.2	-	-
80-200/4R	5.5	4	-	-	-	14.4	13.9	13.4	13.2	12.9	12.7	12.2	11.7	11.2	10.1	8.8	7.2	5.6	-
80-200/4	5.5	4	-	-	-	15.4	14.9	14.3	14.1	13.9	13.7	13.2	12.8	12.3	11.1	9.9	8.4	6.7	-
80-250/5.5R	7.5	5.5	-	-	-	17.7	17.0	16.3	16.0	15.7	15.4	14.6	13.8	12.9	10.7	8.4	-	-	-
80-250/5.5	7.5	5.5	-	-	-	20.5	19.9	19.1	18.9	18.6	18.2	17.6	16.8	15.9	13.8	11.7	9.3	-	-
80-250/7.5	10	7.5	-	-	-	24.0	23.4	22.8	22.5	22.2	21.9	21.3	20.6	19.8	18.0	15.9	13.5	10.8	-

DIMENSION

3(L)M4 32, 40, 50, 65 - up to the 65-200

4 Poles



Model	DN1 Ø	P1 Ø	K1 Ø	D1 Ø	S1	Z		DN2 Ø	P2 Ø	K2 Ø	D2 Ø	S2	Dimensions [mm]													V2	Weight [kg]
						[1]	[2]						Fig.	H	H1	H2	H3	R	W	M	N1	N2	A	B	C		
32-125/0.25	50	95	125	165	16	4	-	32	75	100	140	14	1	252	112	140	102	80	70	114	140	190	213	371	205	PG 11	15.0
32-160/0.37R	50	95	125	165	16	4	-	32	75	100	140	14	1	292	132	160	119	80	70	118	190	240	254	393	219	PG 11	19.7
32-160/0.37	50	95	125	165	16	4	-	32	75	100	140	14	1	292	132	160	119	80	70	118	190	240	254	393	219	PG 11	19.9
32-200/0.55R	50	95	125	165	16	4	-	32	75	100	140	14	1	340	160	180	119	80	70	119	190	240	296	393	219	PG 11	24.5
32-200/0.55	50	95	125	165	16	4	-	32	75	100	140	14	1	340	160	180	119	80	70	119	190	240	296	393	219	PG 11	24.5
32-200/0.75	50	95	125	165	16	4	-	32	75	100	140	14	1	340	160	180	124	80	70	119	190	240	296	432	244÷255	PG 13.5	28.1
40-125/0.37R	65	115	145	185	16	4	-	40	80	110	150	14	1	252	112	140	102	80	70	114	160	210	213	371	205	PG 11	15.6
40-125/0.37	65	115	145	185	16	4	-	40	80	110	150	14	1	252	112	140	102	80	70	114	160	210	213	371	205	PG 11	15.7
40-160/0.55R	65	115	145	185	16	4	-	40	80	110	150	14	1	292	132	160	119	80	70	118	190	240	254	393	219	PG 11	20.2
40-160/0.55	65	115	145	185	16	4	-	40	80	110	150	14	1	292	132	160	119	80	70	118	190	240	254	393	219	PG 11	20.6
40-200/1.1R	65	115	145	185	16	4	-	40	80	110	150	14	2	340	160	180	124	100	70	115	212	265	296	452	244÷255	PG 13.5	28.5
40-200/1.1	65	115	145	185	16	4	-	40	80	110	150	14	2	340	160	180	124	100	70	115	212	265	296	452	244÷255	PG 13.5	28.6
40-200/1.5	65	115	145	185	16	4	-	40	80	110	150	14	2	340	160	180	124	100	70	115	212	265	296	491	244÷255	PG 13.5	30.3
50-125/0.55R	65	115	145	185	16	4	-	50	95	125	165	16	2	292	132	160	119	100	70	114	190	240	254	413	219	PG 11	20.4
50-125/0.55	65	115	145	185	16	4	-	50	95	125	165	16	2	292	132	160	119	100	70	114	190	240	254	413	219	PG 11	20.5
50-160/1.1R	65	115	145	185	16	4	-	50	95	125	165	16	2	340	160	180	124	100	70	115	212	265	296	452	244÷255	PG 13.5	28.6
50-160/1.1	65	115	145	185	16	4	-	50	95	125	165	16	2	340	160	180	124	100	70	115	212	265	296	452	244÷255	PG 13.5	28.7
50-200/1.5R	65	115	145	185	16	4	-	50	95	125	165	16	2	360	160	200	124	100	70	115	212	265	296	491	244÷255	PG 13.5	30.5
50-200/1.5	65	115	145	185	16	4	-	50	95	125	165	16	2	360	160	200	124	100	70	115	212	265	296	491	244÷255	PG 13.5	31.6
50-200/2.2	65	115	145	185	16	4	-	50	95	125	165	16	2	360	160	200	141	100	70	115	212	265	296	474	253	PG 16	30.0
65-125/0.55	80	134	160	200	18	8	4	65	115	145	185	16	2	340	160	180	119	100	95	140	212	280	254	413	219	PG 11	21.9
65-125/0.75	80	134	160	200	18	8	4	65	115	145	185	16	2	340	160	180	124	100	95	140	212	280	254	452	244÷255	PG 13.5	20.0
65-125/1.1	80	134	160	200	18	8	4	65	115	145	185	16	2	340	160	180	124	100	95	140	212	280	254	452	244÷255	PG 13.5	20.0
65-160/1.1	80	134	160	200	18	8	4	65	115	145	185	16	2	360	160	200	124	100	95	140	212	280	296	452	244÷255	PG 13.5	28.5
65-160/1.5	80	134	160	200	18	8	4	65	115	145	185	16	2	360	160	200	124	100	95	140	212	280	296	491	244÷255	PG 13.5	30.0
65-160/2.2	80	134	160	200	18	8	4	65	115	145	185	16	2	360	160	200	141	100	95	140	212	280	296	474	253	PG 16	32.0
65-200/2.2R	80	134	160	200	18	8	4	65	115	145	185	16	2	405	180	225	141	100	95	140	250	320	296	474	253	PG 16	30.0
65-200/2.2	80	134	160	200	18	8	4	65	115	145	185	16	2	405	180	225	141	100	95	140	250	320	296	474	253	PG 16	30.0
65-200/3	80	134	160	200	18	8	4	65	115	145	185	16	2	405	180	225	141	100	95	140	250	320	296	514	253	PG 16	38.0

[1] Standard
[2] On request

* Dimensional details are provided for reference only.
* All specifications are subject to change without prior notice.



EBARA Pumps Malaysia Sdn Bhd
6, Jalan TP3, UEP Subang Jaya Industrial Park,
47620 Subang Jaya, Selangor, Malaysia.
Tel : 03-8023 6622 Fax : 03-8023 9355
Email : sales@ebarapumps.com.my
Website : www.ebarapumps.com.my



Certificate No. KLR 0500080
Certificate No. KLR 6027651

Authorised dealer: